

Interstate #35 as viewed South of Sandstone.



Industry in Pine County includes creameries, dry milk plant, beverage bottling plant, tool and die, various manufacturing concerns, and many forest product operations.



One of the 38 modern school facilities that provide elementary, high school and vocational training for our growing population.

WORSHIP AT THE CHURCH OF YOUR CHOICE WHILE ON VACATION — MOST DENOMINATIONS ARE AVAILABLE.

### TOURIST FACILITIES

More and more people are discovering the recreational advantages of Pine County; the beautiful forests full of game animals, rivers and lakes teeming with many varieties of fish, fine resort and motel accommodations. Activities of all kinds, such as swimming, riding, hiking, golfing, camping and canoeing, and in the evening, theatres, supper clubs and dancing provide the ingredients for a pleasant and long remembered vacation.

#### CALENDAR OF EVENTS

DAIRY DAY	Pine City	June
PINE CREEK HORSE SHOW	Rutledge	July
4TH OF JULY EVENT	Finlayson	July
PINE COUNTY FAIR	Pine City	August
HARVEST FESTIVAL	Sandstone	July
KORN & KLOVER KARNIVAL	Hinckley	July
RUTABAGA DAYS	Askov	August
COMMUNITY FAIR	Markville	September
OLD SETTLERS REUNION	Willow River	September

Your Vacation Guide

TO

# PINE COUNTY MINNESOTA

"In The Heart of America's  
Vacationland"

PRICE  
25c

MINNESOTA'S

# PINE COUNTY

Located

MIDWAY  
BETWEEN THE  
TWIN CITIES  
AND  
TWIN PORTS



"Where Farm meets Forest"





# PINE COUNTY, MINNESOTA . . .



**BOB'S  
STANDARD SERVICE**  
"I'LL DEAL TO FIT YOUR WHEELS  
IN LINE OF TIRES"



On Hwy. 61

629-9982

Pine City, Minn.

CLEAN REST ROOMS

The Village of  
**PINE CITY**  
Welcomes You



**C. M. JOHNSON  
STANDARD SERVICE**  
TIRE SERVICE  
AMERICAN MOTOR CLUB  
POLARIS SNOWMOBILES



Telephone 629-9971

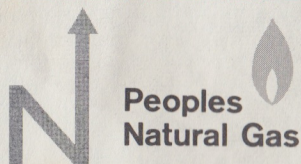
Pine City, Minn. 55063

## GENERAL TRADING CO.

Car — Truck — Tractor  
Parts & Equipment

PINE CITY

Telephone 629-2591



LIVE MODERN  
FOR LESS  
WITH GAS

PINE CITY — HINCKLEY  
FINLAYSON — SANDSTONE — WILLOW RIVER

"Where Your Account is Appreciated"

## THE FIRST NATIONAL BANK

of  
PINE CITY, MINNESOTA

"FRIENDLY BANKING SERVICES FOR ALL"

629-2561

65 MILES TO TWIN CITIES 95 MILES TO DULUTH

## GAIL MOTEL

12 UNITS  
TV, COLOR & B/W  
TELEPHONES

AIR CONDITIONED  
HW BB HEAT  
CREDIT CARDS M/C D/C

Cary & Jan Rootkie

612-629-2559

Pine City, Minn. 55063



## PINE CITY FUEL CO.

Tires — Batteries — Gas — Fuel Oil  
SIMPLICITY LAWN & GARDEN EQUIPMENT  
SNO-JET SNOWMOBILES SALES & SERVICE  
ROY TEICH PROP.

Telephone 629-3560

Pine City, Minn. 55063

GASOLINE  
INFR-HEAT  
FUEL OIL



LUMBER  
L P GAS  
CYLINDER-BULK

**PINE CITY COOPERATIVE ASS'N.**

Hinckley Branch 384-6216

Pine City, Minn.

Oil & Lumber Dept. Phone 629-2581

## NEW HOUSING CONCEPTS INC.

Bus. 629-3496



Lee A. Hennen  
PRESIDENT

Walt Beyer  
PLANT SUPERVISOR

BUILDERS OF FINE HOMES & PRE-BUILT TRUSSES  
Res. 629-3831 South Hwy. 61 Pine City, Minn. 55063

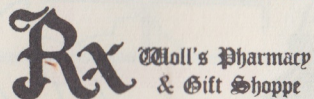
## GEHL OIL COMPANY, INC.

distributors of  
MOBIL PRODUCTS  
PINE CITY, MINN.

**Mobil**

**Mobil**

Phone 629-3160



**Holl's Pharmacy  
& Gift Shoppe**

Pine City, Minn. 55063 Phone 629-3460

HALLMARK CARDS & GIFTS  
VETERINARY SUPPLIES —  
RUSSELL STOVER CANDIES — 629-3460

AIR CONDITIONED • TELEVISION • TELEPHONES  
SPACIOUS OAK YARD WITH PLAYGROUND

## SCHWARTZWALD MOTEL

MODERN STEAM HEATED UNITS  
3 BLOCKS OFF 35 INTERSTATE EXIT

612-629-2511

Pine City, Minn. 55063

629-2507

*Coca-Cola Bottling Company*  
OF PINE CITY, INC.  
PINE CITY, MINN.

## LAND O' LAKES®



FLUID MILK

ICE CREAM

BUTTER • CHEESE • EGGS • TURKEYS • DRY MILK

Best by a country mile



## WAYNE'S CAFE

Best Coffee on the Freeway  
Fresh Strawberry Pie

Open 24 Hours

I-35 & 70



Pine City



## ROCK GARDENS

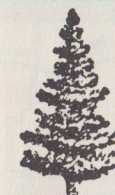
AREA'S NEWEST  
ON & OFF SALE

Liquor — Lounge — Dancing

On I-35 & 70 Exit



Pine City



Compliments of the  
**PINE CITY AREA  
CHAMBER OF  
COMMERCE**

## FLAMINGO BAR & LOUNGE

FINE FOODS — LIQUORS — DANCING

Open Sundays

ON HIGHWAY 61 — APPROX. 85 MILES NORTH OF MPLS-ST. PAUL  
MARV & CELIA MECL, PROPS.

RUTLEDGE, MINN.

Tel. 372-3801

## FINLAYSON —

Pine Lake Area Welcomes You to  
The Heart of the Tourist Country  
Fishing — Swimming — Snowmobiling  
For further information write to Secretary —  
FINLAYSON COMMERCIAL CLUB

## FIRST STATE BANK OF FINLAYSON

BANKING HOURS: 8:00 TO 3 P.M. — Sat. 8:00 TO 11:00 A.M.  
SUMMER HOURS: FRI. EVE. 7-9:00 P.M. — SAT. CLOSED

LOANS — DEPOSITS — INSURANCE — SAFETY DEPOSIT BOXES

Lic. Real Estate Broker — Finlayson Ins. Agency

Finlayson, Minn.

Phone 233-7575



### FINLAYSON CO-OP, INC.

Midland Products—Complete Service Station

GAS — FUEL OIL — PROPANE

TOURIST INFORMATION

PH. 233-6233

FULL LINE FEEDS & SEEDS — BULK TRUCK DELIVERIES

PH. 233-7372



### J. R. STANTON LUMBER CO.

Headquarters for Building Materials

Plumbing — Electrical Supplies

& Sporting Goods

WILLOW RIVER — FINLAYSON — ASKOV

Big Pine Lake

### B & B RESORT

A Modern Family Resort

SAFE BEACH — GOOD FISHING INCLUDING MUSKIES

ALUM. BOATS — MOTORS — BAIT — GAS — OIL

SHOWERS — SAUNA BATHS

PHONE OR WRITE TEL. 233-7622

Finlayson 55735

Bud & Babe Oswald, Props.

### SAND LAKE

- FULL HOOKUPS
- PULL THRU SITES
- SWIMMING
- FISHING
- BOATS

- GROUP CAMPERS
- LAUNDRY
- FREE FIREWOOD
- MINI BIKE TRAILS
- AGATE HUNTING

### SUN BAY CAMPGROUNDS

WRITE — ROY & ANN SUNDBY

BOX H

MOOSE LAKE, MINNESOTA

Phone 218-485-4869

Make Your Next Stop

## HINCKLEY

The Friendly City for Fun or Business

## Gambles

MRS. CLARENCE SCHMIDT

AUTHORIZED DEALER

BUSINESS PHONE 384-6121

HINCKLEY, MINN.

### TENQUIST SURPLUS STORES

Hinckley, Minnesota 55037

4 Stores — 7 Floors in Hinckley

PH. 612-384-6411

We have almost everything

Stop & Look

We Deliver

### TOBIE'S RESTAURANT

Fine Food and Liquors

Junction Highways 35 and 48

OPEN 24 HOURS EVERY DAY

Hinckley, Minn.

Free Hinckley Fire Souvenir

### CHUCK'S 66 — I-35

HINCKLEY, MINN.

Dump Station

BEST OIL COMPANY

CHEVROLET CARS AND TRUCKS

### SKIP'S WICKSTROM MOTOR CO.

WRECKER SERVICE

Phone 384-6197

Hinckley, Minn.



### INTERSTATE TEXACO

Hinckley, Minn. I-35 & 48



Gas, Oil, Diesel Fuel, Ice, Block or Cubes.

Snowmobile Repair & Accessories, Camping Information

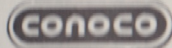
DON THOM, PROP.

TEL. 384-9986

### CARLSON'S CORNER CAFE & SERVICE

GAS — Batteries — Tires — Groceries — Beer — Baitshop

Tourist Information Center



Hwys. 65 & 18,

Phone 612-592-3612

McGrath, Minnesota

### WILLOW RIVER MERCANTILE CO.

Willow River, Minnesota

Everything in General Merchandise

Groceries — Hardware, etc.

One of Pine County's Oldest General Stores

Established 1901 — Be Sure to Stop!



### DAVE'S OIL CO.

WILLOW RIVER, MINN.

David G. Kliniski Sr. Prop.

I-35 & County Rd. #43



TIRES — BATTERIES — GAS — BULK GAS & FUEL — DIESEL FUEL  
LAST STOP IN PINE COUNTY GOING NORTH — TOURIST INFORMATION

### SANDSTONE CHAMBER OF COMMERCE

Home of: Pine County Hospital, Doctors Clinic, Pediatrician and Two M.D.s, Banning State Park, Abandoned Riverside Quarries, Scenic River Drive, Public Golf Course, Airport, Federal Correctional Institution, State Youth Camp, Industrial Sites, Hunting, and Fishing.



Zenth Air Photos, Spencer, Iowa

Aerial view of Interstate 35W at Hinckley.

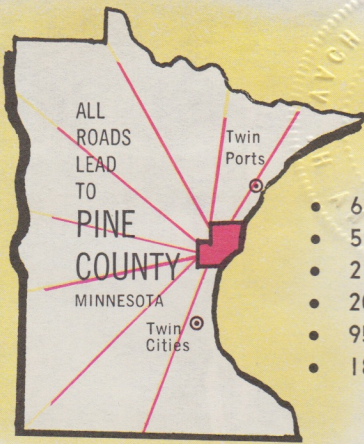


Dairying is dominant farm enterprise for over 2,000 Pine County families.

Miles and miles of snowmobile country.

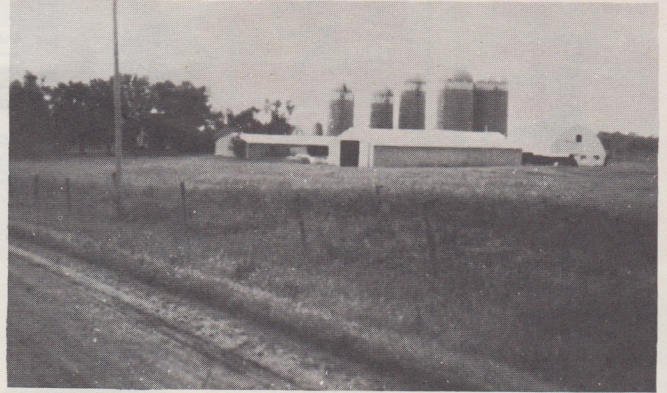


# PINE COUNTY, MINN



- 635 Thousand Acres of Wildlife Area
- 5 State Forests
- 2 State Parks
- 20 Trout Streams
- 95 Lakes
- 18,000 Friendly People

Drive the 160 mile Chengwatana Scenic and Historic Trail. Tour guide, "Chengwatana Cronical" available from the Pine County Historical Society.



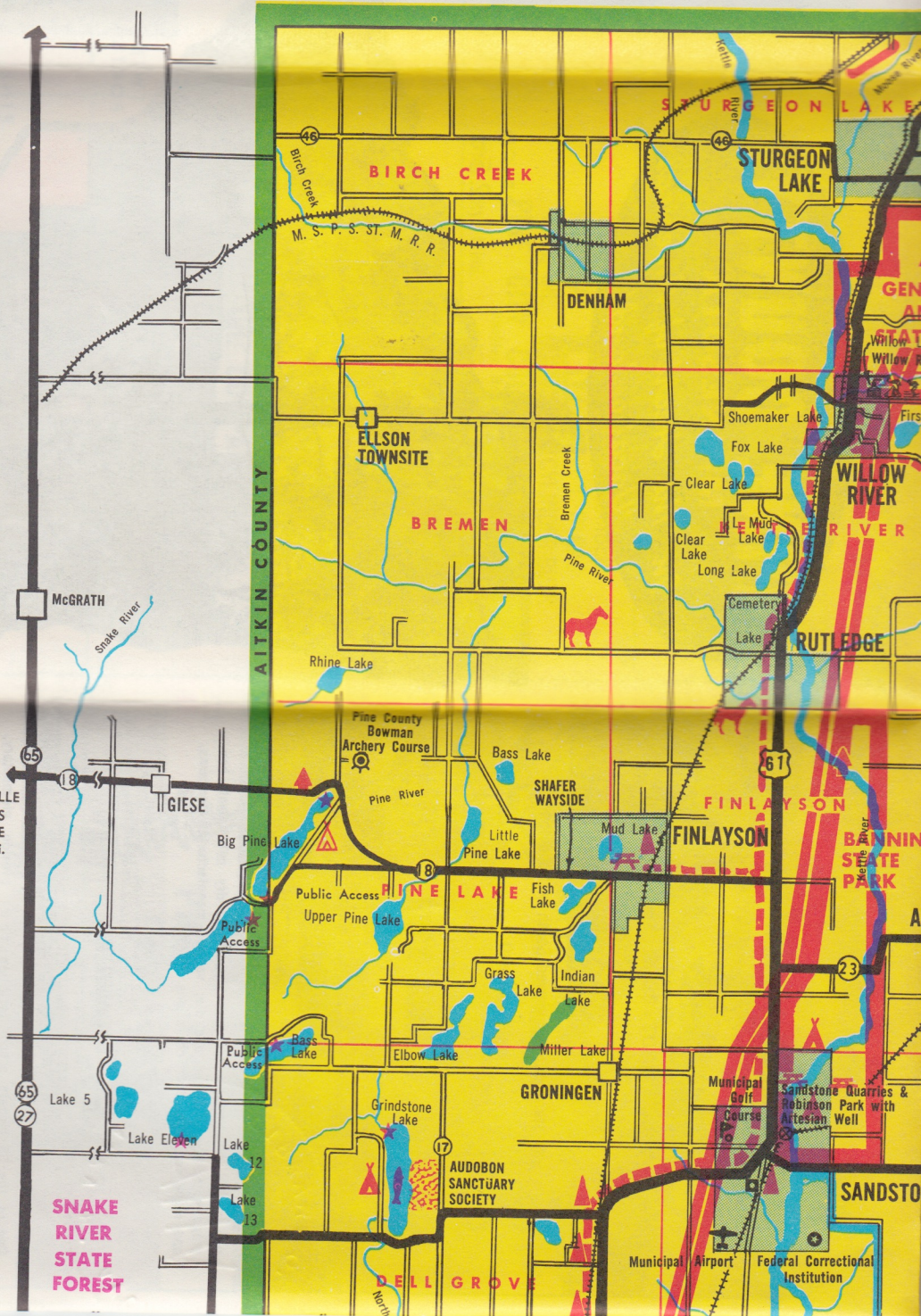
From  
Nor  
La  
Peo



To MILLE  
LACS  
LAKE  
9 mi.

Snowmobile trail maps are presently available for marked trails in Nemadji, Chengwatana, General Andrews State Forest and St. Croix State Forest. Contact Area Forester, Minnesota Lands and Forestry, Moose Lake, Minn. 55767. 218-485-4688.

For Trail maps of Banning and St. Croix State Parks contact respective Park Managers.



1  
2  
3  
4  
5  
6  
7

8  
9  
10  
11  
12  
13  
14



Campsite on lake near Finlayson



Many deer and other wildlife can be seen in St. Croix State Park 17 miles east of Hinckley. 2200 Acres of wildlife and recreation lands... many miles of St. Croix and Kettle River frontage featuring nature trails, camping, canoeing, snowmobiling. Watch for the Bears.

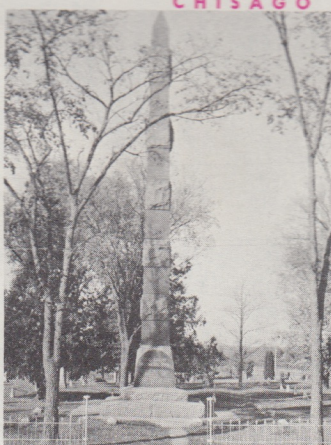


Kettle River Highbanks — St. Croix State Park. For canoe information contact: Box 276, Hinckley, Minnesota 55037.



ROOT'S TRAIN — SKUNK LAKE

With a train packed full of terrified, screaming passengers behind him and a blazing inferno ahead and beside him, James Root backed his train northward from a burning Hinckley in a race against death and that September holocaust of 1894, known as the Great Hinckley Fire. Gaining a little, he brought his train to a stop at Skunk Lake where his passengers and crew sought safety in its muddy and shallow waters. Only those on his train who sought safety elsewhere perished. A small pond along Highway No. 61 about six miles north of Hinckley marks the location of Skunk Lake, once so vital to so many people.



The Hinckley Historical Monument dedicated to the 248 unidentified persons who lost their lives in the Hinckley fire of 1894 which caused the death of 418 individuals.

Just southwest of Brook Park the State erected a beautiful monument in 1915, to honor those people who died in the Hinckley Fire. Twenty-three of the twenty-six persons who lost their lives are buried in two long trenches.

By an act of the Legislature in 1896 a beautiful granite shaft was erected east of the village of Hinckley to honor those who lost their lives in the Great Hinckley Fire of 1894 and to mark the graves of the 248 unidentified persons buried in four long trenches there.

A B C D E

# MINNESOTA

## GREETINGS

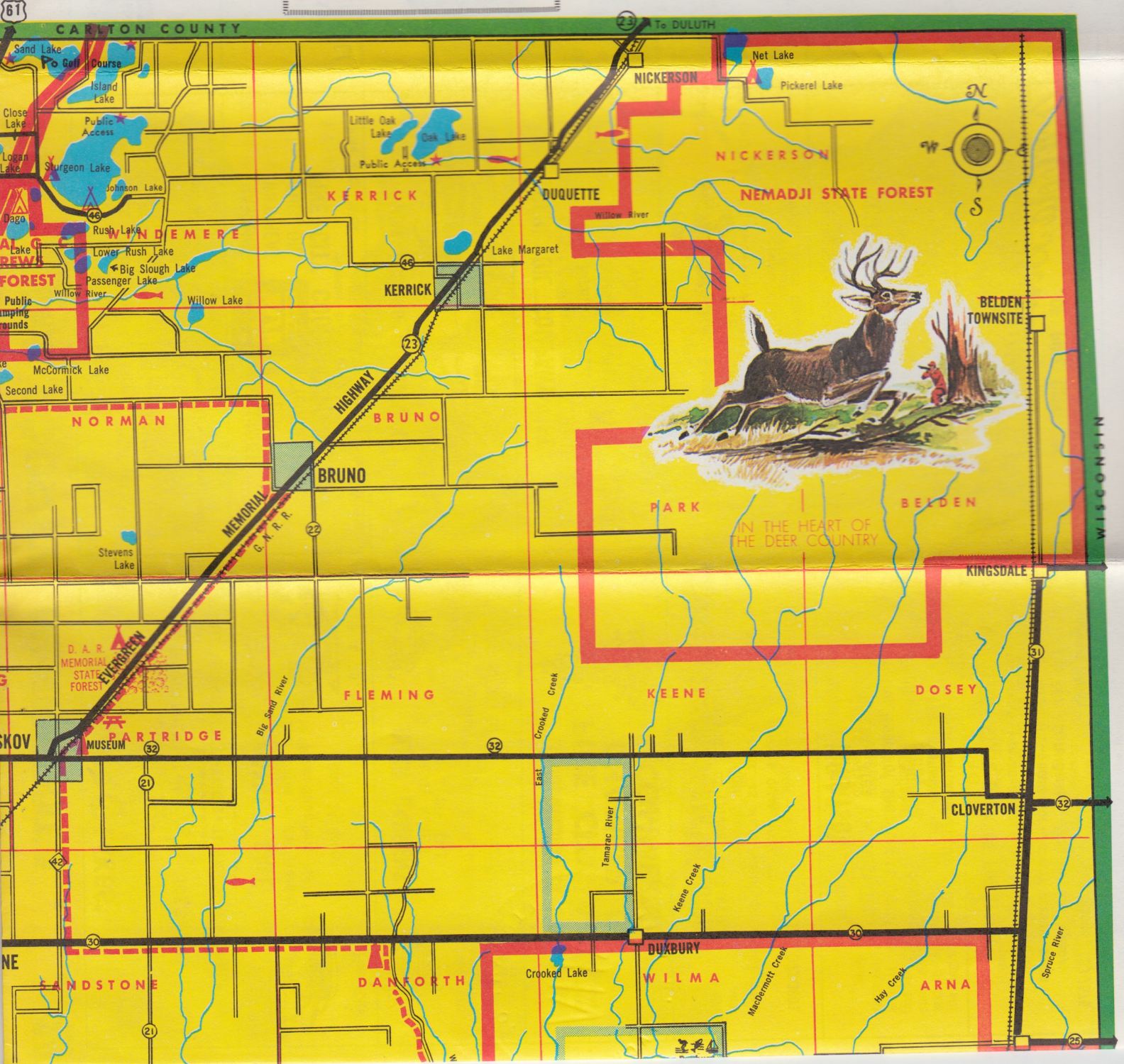
the Gateway To The  
and  
of 18,000 Friendly  
— Try us out.

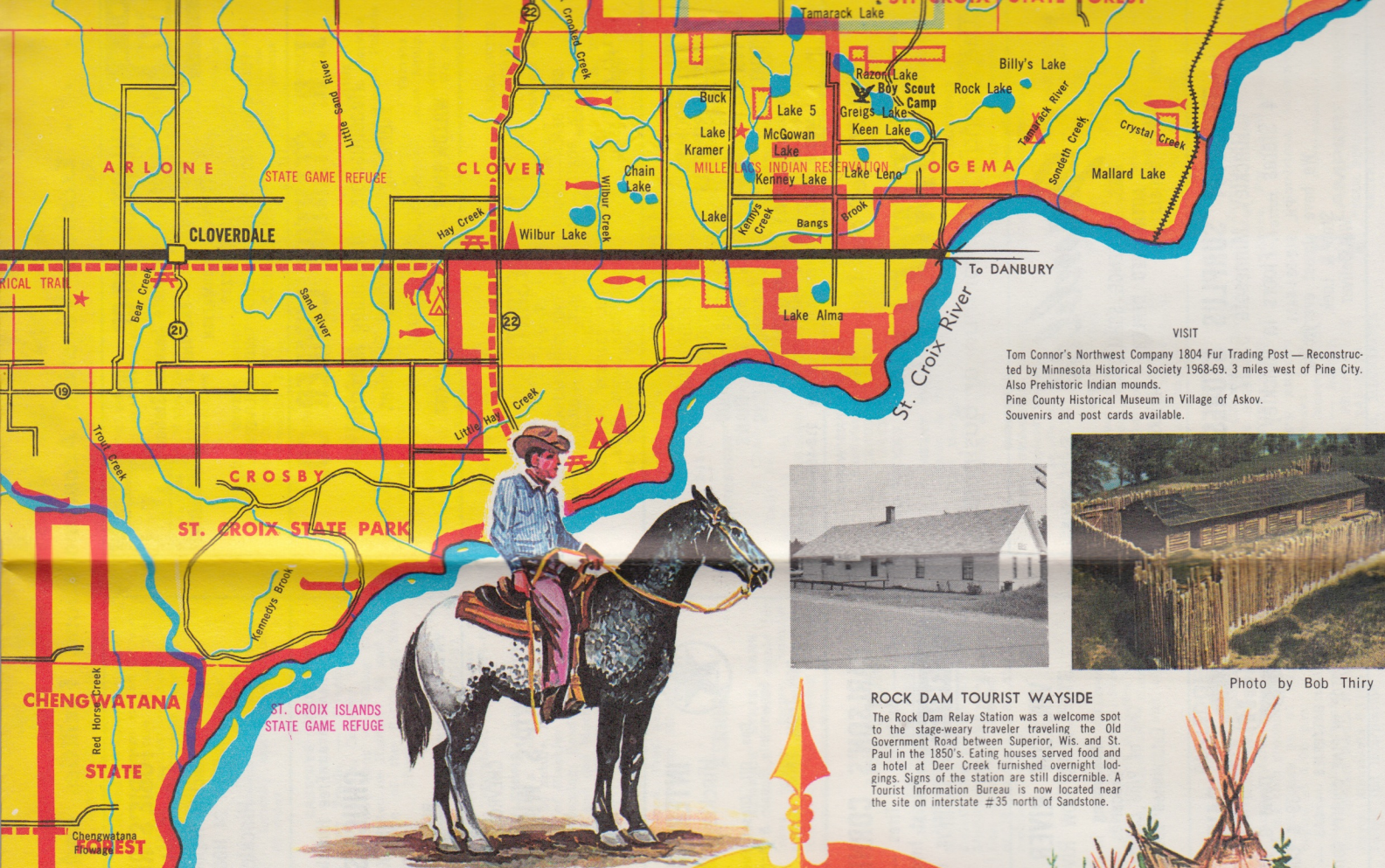
**LEGEND**

-  Canoe Routes
-  Trout Streams
-  Saddle Trails
-  Picnic Grounds
-  Wayside
-  Historic Sites
-  Public Boat Launching
-  Public Campgrounds
-  Private Campgrounds
-  Chengwatana Trail



Beautiful Hells Gates in Banning State Park, 2 miles north of Sandstone.





Visit  
 Tom Connor's Northwest Company 1804 Fur Trading Post — Reconstructed by Minnesota Historical Society 1968-69. 3 miles west of Pine City. Also Prehistoric Indian mounds. Pine County Historical Museum in Village of Askov. Souvenirs and post cards available.

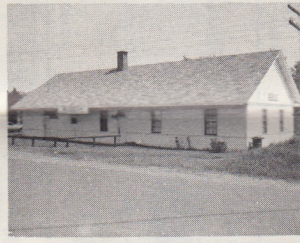


Photo by Bob Thirty

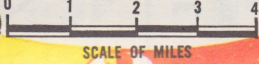
**ROCK DAM TOURIST WAYSIDE**

The Rock Dam Relay Station was a welcome spot to the stage-weary traveler traveling the Old Government Road between Superior, Wis. and St. Paul in the 1850's. Eating houses served food and a hotel at Deer Creek furnished overnight lodgings. Signs of the station are still discernible. A Tourist Information Bureau is now located near the site on interstate #35 north of Sandstone.

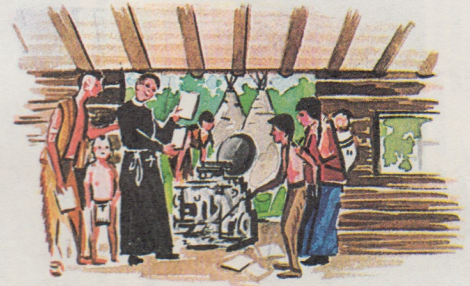
There are many riding stables and trails in Pine County. (See Map)

**MAP OF PINE COUNTY MINNESOTA**

A COUNTY WITH AN INTERESTING PAST . . . AN ATTRACTIVE PRESENT . . . AND A PROMISING FUTURE



WORSHIP AT THE CHURCH OF YOUR CHOICE WHILE ON VACATION — MOST DENOMINATIONS ARE AVAILABLE.



**POKEGAMA MISSION**

The Pokegama Mission, established in 1836, on the east shore of Pokegama Lake was the scene of many conflicts between Sioux and Chippewa tribes before it was abandoned and the Indians sent to reservations. These and other missionaries accomplished much in frontier Minnesota. They established schools, taught the Indians agriculture, wrote letters and reports about Indian life. They also translated the Bible and published books in the Sioux and Chippewa languages. To facilitate this work a printing press was brought into the Pokegama Mission. This was the first printing press ever to be set up in Minnesota.

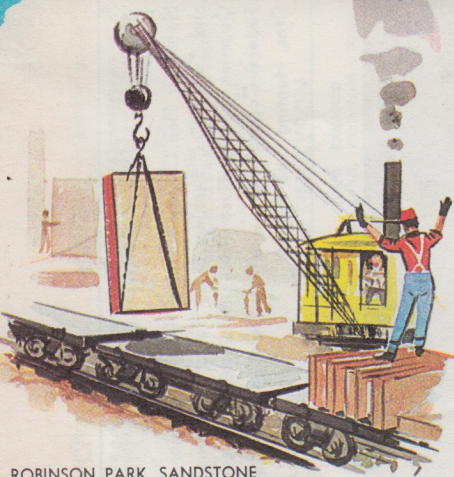
**CHENGWATANA (Town of Pines)**

Pine County was officially organized March 1, 1850. Chengwatana, an old village and trading post at Cross Lake outlet of Snake River, was designated as the seat of a county whose population in 1860 was about 92. The first courthouse was destroyed by fire in 1870. In 1872, the county seat was moved to Pine City where a new courthouse, was built.



**BANNING STATE PARK**

Banning (originally "Quarry") situated in Finlayson Township was named in honor of William T. Banning, a railroad contractor who was born in Delaware and settled in St. Paul in 1855. The Plat contained 100 lots and six streets. Established industries were Sandstone Quarries and Barber Asphalt Co. Contemplated industries, Hydro-electric plant and Pulp Mills. Incorporated in 1901. Postoffice established 1896, discontinued 1912. Population 150. Walls of one large building, railroad beds, machine mounts and building slabs remain as Pine County's only ghost town.



**ROBINSON PARK, SANDSTONE**

The Sandstone Quarries were opened in August of 1885. The diamond tooth saw was run by water power from a dam erected on the Kettle River. The stone was of very good quality and many fine buildings and bridges have been built with stone from these quarries. This industry caused the very rapid growth of Fortuna which name was then changed to Sandstone. Since the advent of structural steel and concrete in recent years, the use of stone has come to a near end.

Map dedicated in memory of L. G. Brabec.