

Call Goldwell Banker

THE PINE CITY

PINE CITY

1991-92
Pine City
Information Guide

A PUBLICATION OF THE PINE CITY PIONEER

Call Coldwell Banker

PRO IV REALTY

140 Evergreen Square
Pine City, MN 55063
612/629-7541
METRO
222-0024

944 S. Lake St.
Forest Lake, MN 55025
612/464-4101

SOLD

COLDWELL
BANKER

PRO IV REALTY
629-7541
METRO 222-0024

- Residential • Commercial
- Industrial • Lake Property
- Acreage • Apartments • Rural/Farm
- Rentals • Recreation

A MEMBER OF THE
SEARS FINANCIAL NETWORK

COLDWELL
BANKER

*The Home
Sellers*

MLS

REALTOR

EQUAL
HOUSING
OPPORTUNITY

*A
Sign
of the
Times*

The
self
rou
St
coun
neap
The
20,74
Pin
near
Lake
recre
Croix
Ov
navig
recre
and t
dents
cross
Agr
orient
Two s
Squa
vide o
vices
A g
City is
worki

The
matio
Cumm

Th
by t
Ave
prov
tors
the l

For
Pine
lishe
City
at P
ti an
subs
\$2 d



Pine City

The county seat of Pine County, Pine City itself has a population of 2,468. The area surrounding the city has close to 5,500 people.

Situated at the southern end of the large county, the community is 65 miles north of Minneapolis-St. Paul and 90 miles south of Duluth. The estimated population of Pine County is 20,742 and it encompasses 906,362 acres.

Pine City is on the banks of the Snake River near its junction with Cross Lake. Pokegama Lake lies just west of the city, and nearby are the recreational opportunities offered by the St. Croix River and the Upper and Lower Snake.

Over 50 miles of shoreline and 3,000 acres of navigable waterway make Pine City an attractive recreation area. The Chengwatana State Forest and the nearby St. Croix State Park allow residents and visitors to pursue camping, hiking, cross country skiing and other outdoor activities.

Agriculture, light manufacturing and service-oriented work are the bases of the economy. Two shopping malls, Pine Plaza and Evergreen Square, plus a downtown business district, provide consumers with all types of goods and services.

A growing and prosperous community, Pine City is known for its volunteer spirit, its fine, hard working citizenry and outstanding city services.

The cover photo for this year's Information Guide was taken by Lorraine Cummings, Corner Photo, Pine City.

The Pine City Information Guide is published by the Pine City Pioneer, Inc., 405 E Second Ave., Pine City, MN 55063. It is designed to provide residents, old and new, as well as visitors with basic and useful information about the Pine City area.

For up-to-date, year round information, the Pine City Pioneer (USPS 433-160) is published weekly for \$16 per year by the Pine City Pioneer, Inc. Second class postage paid at Pine City, MN. Outside Pine, Chisago, Isanti and Kanabec counties, add \$6 yearly to subscription costs. Senior citizens receive a \$2 discount.

 **Pine City PIONEER**



EVERGREEN SQUARE
PINE CITY-I-35 & Hwy. 324



**Fast, Friendly
Carry-Out
Service**

• **Low
Prices**

• **Highest Quality**

• **Best Selection**

**FRESH DELI
& BAKED GOODS**

DINE IN OR TAKE OUT

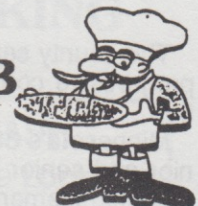
(Delivery available)

**FAMILY FUN
IS AT THE PUB**

Open M-TH. 3-11 p.m.,

F. & S. 3 p.m. - 1 a.m.

Sunday, 4-10 p.m.



PIZZA PUB

135 5th St., Pine City-629-6468

**THE PHOTO
PROFESSIONALS**

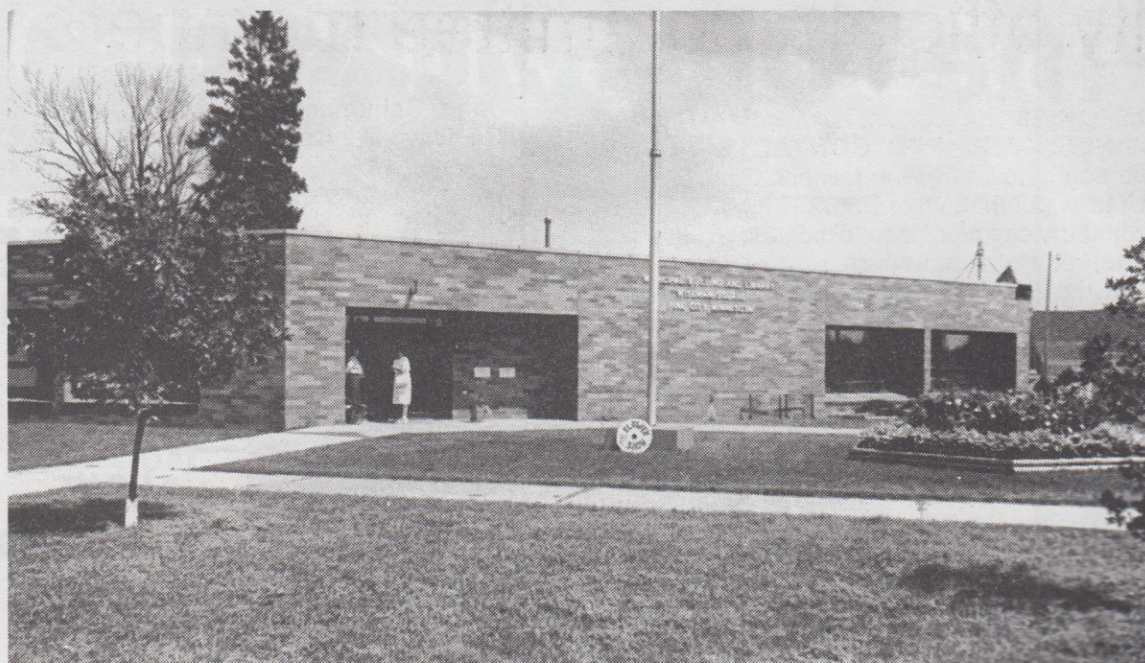
- 1 hour processing
- portrait studio
- matting, framing service
- film, batteries, camera supplies



CORNER PHOTO

& Portrait Studio

265 5th St., Pine City-629-7318



THE PINE CITY MUNICIPAL BUILDING houses the library, the city council meeting chambers and a community room available to the public.

The city

Many services add to high quality of life

The county seat of Pine County, Pine City is a progressive community with a growing population.

Minnesota's 38th Star City, it boasts a new junior and senior high school and completely remodeled elementary school. The friendly people and fine facilities play an important role in helping the community grow.

Among the city's nice facilities is the Pine City Municipal Building or city hall. It is conveniently located in the business district on 5th St. City Administrator Robert Voss and deputy clerk Chris Bloomquist keep office hours from 8 a.m. to 4:30 p.m. Monday through Friday and can answer any questions regarding city services.

The municipal building also houses a community gathering room which is available to the public for meetings and celebrations. Reservations for use of the room, which has an adjacent kitchen that may be used for a nominal fee, must be made in advance by stopping in the city office or calling 629-2575.

The Pine City Public Library can also be found in the municipal building. A branch of the East Central Regional Library System, its services go far beyond making reading material available to

the public.

The city council meets on the first Wednesday of every month at 7:30 p.m. in the council chambers, which are part of city hall. The Pine City Planning Commission meets at 7:30 p.m. on the last Wednesday of each month.

Next to the municipal building is the city garage, which also houses the equipment and meeting room for the Pine City Fire Department.

Two lovely parks add to Pine City's popularity as a place to enjoy the Minnesota quality of life. Robinson Park in the downtown area has playground equipment, a gazebo shelter and picnic facilities, and the beach and recreation area on west 6th Ave. have horseshoe pits and a handball court among other features.

A new park is in the making on the banks of the Snake River in the north part of Pine City. It will offer boat and fishing piers, picnic facilities, a wildlife pond and more.

An active chamber of commerce provides information on business related functions as well as general information about Pine City and events in the area throughout the year. For information call Adrienne Roubinek at 629-3861.

Ci
FIRE
BUS
...
WAT
Jo
ce
LIQU
Jo
Ja
FINA
Bill
Bo
INSU
Bill
Bo
PAR
Bill
CEM
Jo
ENVI
Jim
Da
ere
FINA
PLAN
Chr

•Pur

RO
WEL

410
Hinc

City officials, committee members

FIRE CHIEF Cary Rootkie
BUSINESS AND PTC CONTACTS

..... Fred Holstein, Gene Biever.

WATER, STREETS, SEWER

John Schumacher, Dave Rholl, John Skluzacek, Fred Holstein.

LIQUOR

John Schumacher, Dave Rholl, Bill Sauter, Jack Grave, Bob Voss, Dan Kieselhorst.

FINANCE AND BUDGET

Bill Sauter, Dan Kieselhorst, John Lindquist, Bob Voss.

INSURANCE

Bill Sauter, John Skluzacek, Dan Kieselhorst, Bob Voss.

PARKS AND RECREATION

Bill Sauter, John Schumacher, Bob Voss.

CEMETERY

John Schumacher, Fred Holstein.

ENVIRONMENTAL & WASTE DISPOSAL

Jim Sloan, Butch Lidstrom, John Schumacher, Dan Kieselhorst, Fred Holstein, Jane Levenenz.

FINANCE OFFICER Dan Kieselhorst

PLANNING COMMISSION

Chris McHugh, chairman, Gertrude Kessler,

John Schumacher, Paul Rydberg, Doug Spindler, Dennis Willert, Ray Arimond, Brian Scholin, Ray Kosbab. Non-voting members, Randy Nummela and John Lindquist.

CULTURE & RECREATION

Mary Kay Sloan, Bob Walz, Loren Samuelson, Sue Sharp, Sue Rydberg-Sauter, Roger Hagstrom, Andy Rohweder, Dan Kieselhorst.

OMBUDSMEN COMMITTEE

Gertrude Kessler, Nancy Mach, Bob Voss, Dan Kieselhorst.

AIRPORT SUPERINTENDENT

..... John Becvar

DOG CATCHER Dave Wendt

WEED CONTROL INSPECTOR

..... Robert Reiser

FIRE MARSHAL Earl Foster

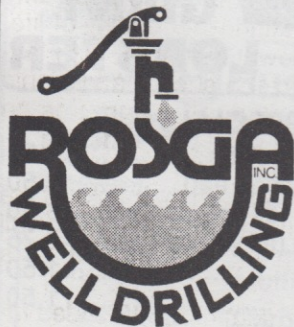
HEALTH OFFICER Dr. Ralph Mach

CIVIL DEFENSE DIRECTOR Cary Rootkie

BUILDING INSPECTOR Randy Nummela

- Well Drilling and Repair
- Pump Installation and Repair
- Sealing of Old Wells

Celebrating our
29th year in the
ground water industry



410 2nd. St. S.E.
Hinckley, Mn 55037

BUSINESS
384-6103
TOM ROSGA
384-6085



GOULD PUMPS
SALES AND SERVICE
• Pumps • Pressure Tanks
• Water Lines

SEE US FOR ALL YOUR BANKING NEEDS

• \$ INSTANT CASH

- Checking • Home Loans
- Savings • Car Loans • CDS
- Ag Loans • Personal Loans
- Drive-Up Service
- Business Loans
- Much More!

Folks have been counting on us for 95 years. We've been there in the past, we'll be there in the future.



First National Bank
Of Pine City

1ST
FNB

A TRADITION OF FRIENDSHIP AND SERVICE
629-2561

Chamber plays active role

The work of an active Chamber of Commerce is a boon to any city, as the Pine City Area Chamber of Commerce has proved time and again.

President Betty Griffin has set the creation of new jobs in the community as a top priority for the Chamber, and members of the organization are active in all efforts to promote the city to industry prospects.

Griffin and the Chamber board members also emphasize the chamber's role as a resource for helping local retailers cope with the challenges of the 90s.

The Chamber office is at 705 Hillside Ave., where secretary Adrienne Roubinek is available on a part-time basis to answer questions regarding activities and services.

The chamber takes the lead in planning and organizing events which bring the various segments of the community together. Among these are the industry recognition banquet and Business Day. It helps sponsor the Santa party in December and chooses a citizen of the year who is recognized at a public banquet in the spring.

The Miss Pine City contest and the parade which is part of the Pine County Fair each year are also Chamber functions.

To reach the Chamber office call 629-3861. The board meets on the first Tuesday of every month at 7 p.m. at city hall.



**MAKE US A HABIT!
YOU'LL LIKE US!**

We specialize in Hi's,
Thank Yous
and smiles!

**EVERYDAY LOW PRICES
ON GROCERIES**

1 block S. of courthouse-Pine City
OPEN 7 DAYS A WEEK-6 AM-10 PM
629-76733

MAJOR CREDIT CARDS ACCEPTED

SAUSER'S HARDWARE 83 YEARS STRONG

in the business
of
HARDWARE AND POWER EQUIPMENT

**"You name it,
we've probably got it!"**



DOWNTOWN
PINE CITY
629-3437

Muffie's *On the Lake*
629-9979
South end of Lake Pokegama
CLOSED MONDAY



-SERVING-
Tues.-Fri. 5 p.m. - 10 p.m.
Weekends-Noon-10 p.m.

**HOME
OF THE
GIANT
LOBSTER**

DAILY SPECIALS

Sunday-1/4 Chicken & Ribs	\$6.50
Tuesday-Fish (all you can eat)	6.50
Wednesday-Chicken (all you can eat)	6.50
Thursday-Texas Ribs (all you can eat)	7.75
Friday-Prime Rib	11.50
Saturday-Prime Rib	11.50

Muffie's
on the Lake

Phone numbers for city officials

CITY ADMINISTRATOR

Robert Voss.....629-2575

MAYOR

Bill Sauter.....629-6365

CITY COUNCIL MEMBERS

John Schumacher.....629-6145

Dave Rholl.....629-3997

John Lindquist.....629-3413

Fred Holstein.....629-2079

FINANCE DIRECTOR

Dan Kieselhorst.....629-6891

BUILDING INSPECTOR

Randy Nummela.....629-2575

PLANNING COMMISSION CHAIRMAN

Chris McHugh.....629-2818

FIRE CHIEF

Cary Rootkie.....629-3414

ASK ABOUT OUR CD OF THE MONTH

Special rate
and term every month

SATURDAY
MORNING LOBBY
HOURS



**PINE CITY
STATE BANK**

629-6713



The Quality Bank

See PINE CITY FUEL for

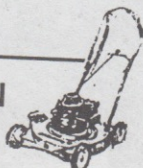


GOOD YEAR
FARM, TRUCK, AUTO
TIRES

"PIT STOP"
ON-FARM TIRE SERVICE



LAWN & GARDEN
EQUIPMENT



Simplicity

Husqvarna
SWEDEN

The Chain Saw Professionals.



McCULLOCH

jari

Sickle Mowers



Sinclair Gas & Oil

- *Bulk Gas & Diesel Fuel Delivery
- *Full & Self Serve Gas Pumps
- *Lube Oils



PINE CITY FUEL, INC.

MASTER CARD-VISA-DISCOVER

629-3560

- *Tune-Ups
- *Muffler Work
- *Brake Work
- *Carburator Work
- *Oil Changes
- *Tire Repair
- *Small Engine Repair

County officials

As the county seat for Pine County, Pine City is fortunate to have the courthouse, the center for all county business, located within its boundaries.

Situated on Highway 61 in downtown Pine City, the building houses the offices of all county officials, the county board meeting chambers, the district courtrooms and county welfare and human services offices, among others.

Much of the information about county government and business can be obtained from County Auditor Larry Perreault's office on the north end of the first floor. New residents can find plat books there or learn who their county commissioner and township officers are.

An elevator entrance on the north end of the courthouse provides access to the lower level as well as to the first and second floors of the courthouse.

PINE COUNTY OFFICIALS

ASSESSOR

Steve Hacken.....629-6781, ext. 150

ATTORNEY

John Carlson.....629-6781, ext. 170

AUDITOR

Larry Perreault.....629-6781, ext. 133

COURT ADMINISTRATOR

Ina D'Aoust.....629-6781, ext. 182

ENGINEER

Phillip G. Bergem (Acting).....629-6727, ext. 191

SOCIAL SERVICES DIRECTOR

Robert Walz.....629-6781, ext. 102

COUNTY NURSE

Virginia Rootkie629-6781, ext. 166

RECORDER

Frances Southwick629-6781, ext. 129

SHERIFF

Don Faulkner.....629-3930, ext. 140

TREASURER

Ruth Blahnik.....629-6781, ext. 138

ZONING/SOLID WASTE OFFICER

Shirley Smetana Basta629-6781, ext. 123

DISTRICT COURT JUDGE

Jim Clifford629-6781, ext. 154

SURVEYOR

M.B. Rude.....629-3267

VETERANS SERVICE OFFICER/CIVIL

DEFENSE DIRECTOR

Steve Johnson.....384-6110

AG EXTENSION SERVICE

Janet Rathke384-6156

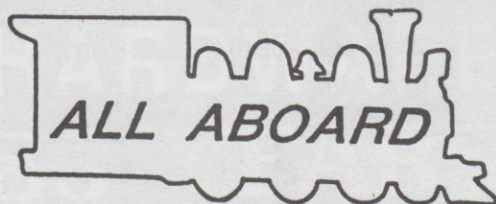
Steve Draskowski384-6156

AG INSPECTOR

See County officials, Page 9

VISIT THE PINE CITY DEPOT SHOPS

DOWNTOWN PINE CITY•220RAILROAD ST.



629-6861

M-F 9-5 Sat. 9-3

- Quality used children's, women's & maternity clothing

- Playroom available

ENJOY OUR
"MINI RAILROAD
MUSEUM"

CUSTOM WOOD WORKING



BUILT THE
OLD
FASHIONED
WAY!

BUILT
TO LAST

BOB HAEDT-629-7638

OAK WORKS

23 Hart Senate Office Building,
Washington, D.C., 20510.....202-224-5014

THE BEST REASON TO HEAT OFF-PEAK ISN'T THE LOW COST. IT'S YOUR FAMILY.



Why Safe Electric Heat is the Best Value.

The low cost of off-peak electric heating is a benefit enjoyed by thousands of families. An even more important benefit is the peace of mind from knowing your family is kept warm by safe, flameless electric heat.

Low-cost and safety make a great combination. Ask your electric cooperative's energy experts for details.

OFF PEAK

E.T.S.

Relax, it's electric!



East Central Electric Ass'n.

BRAHAM, MN 55006

612-396-3351 • 612-629-2002

North Pine Electric Co-op

FINLAYSON, MN 55735

612-233-6311 • 800-752-8143

Vo
inf

Pine
sional
trict 148
City, is
19.

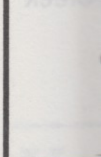
Pine
part of
service
velopm

Voter
precinct
Highwa
and Pin
cast the

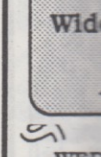
Pine
passes
and are
member
takes p
Resid
elect of
Polling



Wid



Wid



Wid

Voter information

Pine City is in Minnesota's Eighth Congressional District, Senate District 14 and House District 14B. Royalton Township, just south of Pine City, is in House District 19B and Senate District 19.

Pine County is in the 10th Judicial District. It is part of the state's Region 7E, which administers services through the East Central Regional Development Commission in Mora.

Voters in Pine City are divided into two precincts for city, state and national elections. Highway 61 is the dividing line for Pine City East and Pine City West. Residents in both precincts cast their ballots at Pine City Hall.

Pine City School District No. 578 encompasses about 5,000 homes and businesses in and around Pine City. Elections to the seven-member board are held each November. Voting takes place at Pine City Hall.

Residents of townships surrounding Pine City elect officials to their town boards every March. Polling places are at the respective town halls.



WOOD RIVER INN

Hwy. 70 W. Grantsburg, WI
715-463-2967

**Featuring
Karaoke
or Live Entertainment
every Friday,
Saturday & Sunday**

INTERNATIONAL MENU

•Italian•Mexican•StirFry
•American

Wide variety of specialties guaranteed
to please every palate-

ALL SELECTIONS UNDER \$10

HALL AVAILABLE FREE FOR
WEDDINGS, ANNIVERSARIES AND SPECIAL
OCCASIONS FOR UP TO 250 PEOPLE



Metropolitan Federal Bank, fsb....

One Good
Friend
Helping Another



The Heartland's Bank™

METROPOLITAN

FEDERAL BANK *fsb*

FDIC
insured

SEARS
CATALOG STORE

Shop 24 Hours A Day-7 Days A Week

1-800-366-3000

DOWNTOWN PINE CITY
629-2588

**STORE
HOURS**

Mon.-Fri. 9-5 • Sat. 9-Noon



**JB's
HARDWARE
HANK®**

For all your hardware needs

Pine City 629-2225

and

**JB'S RENTAL
CENTER**

629-3923

Across from JB's Hardware
Downtown Pine City
OPEN 7 DAYS A WEEK

Need it? Rent it!

...and Save!

Renting does it right!



Township officers

PINE CITY TOWNSHIP

Supervisors are Charles Emslander, 629-2482, Robert Soderbeck, 629-3246, and Ed Stoffel, 629-3219. Clerk is Helen Nordrum, 629-2305. Treasurer is Dallas Madison, 629-3239.

ROYALTON TOWNSHIP

Supervisors are Donald Folkestad, 396-2476, Howard Carson, 396-2410, and Gary Livingston, 396-3272. Clerk is Arnold Pangerl, 629-2889. Zoning officer is Gary Folkestad, 396-3574.

POKEGAMA TOWNSHIP

Supervisors are Leonard Sigurdson, 679-3159, John Stahlke, 629-2657 and Harold Thiry, 629-3721. Clerk is Darlene Pavek, 629-2764 and Treasurer is Eileen Neville, 629-3397.

CHENGWATANA TOWNSHIP

Supervisors are Steve Wiener, 629-3710, Larry Peterson, 629-3206, Randy Wiener, (no

number available). Clerk is Vince Merrick, 629-3791 and Treasurer is Delphine Miller, 629-6263.

BROOK PARK TOWNSHIP

Supervisors are Mark Kobberdahl, 679-2902, Tom Fore, 629-3321, Ronald Hanson, 679-3321. Clerk/treasurer is Clinton Whited, 679-1046.

MISSION CREEK TOWNSHIP

Supervisors are Gene Rootkie, 384-6001, Frank Libra, 384-6722, and Ben Hancock, 629-3371. Clerk is Maxine Odendahl, 629-2192, and Treasurer is John Plasek, 629-2861.

MUNCH TOWNSHIP

Supervisors are Richard Redner, 629-2862, Harold Reiser, 384-6740, and Mark Dahl, 629-6622. Clerk is Dale Gilliland, 384-6080, and Treasurer is LaVon Currey, 629-2684.

Fire wardens in the townships

All Pine County townships and municipalities are served by fire wardens who have burning permits available.

The permits are required by law for any open burning in Minnesota. Fire wardens in the Pine city area townships are:

BROOK PARK

Stanley and May Fohrman, Brook Park, Dave and Harriet Hall, Brook Park and Terry Lakin, Brook Park.

CHENGWATANA

Kurtiss Rike, Pine City.

MISSION CREEK

Richard Luedtke, Beroun.

PINE CITY

Warren and Anna Shanky, Pine City.

POKEGAMA

Richard Klande, Pine City; Raymond and Lorraine Stransky, Henriette; Duane and Karen Finger, Pine City.

ROYALTON

Carl and Kathy Schlaeger, Pine City.

ROCK CREEK

Ronald Aldorfer, National Park Service Info, Hwy 70; and Pat and Kathy Coury, Rock Creek and Richard Moncrief, Jr., Rock Creek.

MUNCH

Harold and Katherine Reiser.

Featuring:
Maxum Boats
Ercoc Pontoons
and Fishing Boats
Full General Motors Line
Jeep/Eagle
Complete Sales • Parts • Service



SALES HOURS:
M-F 8:30
Sat 9:30

**Car/Truck City
& Marine**

Hwy. 61 Pine City, MN

SERVICE HOURS:
M-F 9-4:30
Sat. 9-Noon

Local
629-6751











**YOUR
BEST
BUYS**

FOR ALL
OCCASIONS



**PINE CITY
MUNICIPAL LIQUOR**

OFF SALE- Monday-Saturday
8 a.m. - 10 p.m.
629-2020



Pine Plaza

MAYTAG *home style* **LAUNDRY**
EQUIPPED PINE CITY SELF-SERVICE PINE PLAZA

PINE PLAZA - Pine City

Open 6 a.m. - 9 p.m.
7 Days a Week

"SHOP WHILE YOU WASH"

A taste to remember

BERCHIN'S



PINE PLAZA • PINE CITY
629-3955

ENTERTAINMENT HEADQUARTERS

VIDEO VISION

Radio Shack

Dealer

RCA
Sales/Service



- Satellite &
- Cellular Phone Sales

629-6808



629-7666

Coast to Coast.

America's TOTAL HARDWARE® Store

Pine Plaza Shopping Center

629-6693

Pine City, Mn 55063

STORE HOURS: Mon.-Fri. 8 AM-9PM
Saturday 8 AM-6PM
Sunday 9 AM-5PM

- We Rent Rinse 'N Vac
- We Mix Paint
- We Cut Glass
- Hunting & Fishing Licenses
- We Cut Keys
- Window & Screen Repair



Koppen's Snyder & Collectables Drug *more than just a drug store*



HERITAGE VILLAGE COLLECTION



Hallmark Cards Snow Village

Dolls, Crystal, Prints, Collectables, & Fine Gifts

Open 7 Days a Week • In Pine Plaza
Sun. 10 a.m.-5 p.m., M-F 8 a.m. - 9 p.m.
Saturday 8 a.m. - 7 p.m.
(612) 629-6708

- * Styling * Perms * Coloring * Ear Piercing
- * Aveda Natural Skin Care Products

* Wolff Suntan Bed

WOLFF SYSTEM
U.S.A.

- * Products by Nexus, Mane Street, Paul Mitchell & Scruples
- * Special Student Rates



OPEN 6 DAYS A WEEK

HOURS:

M-F- 8:30 a.m. - 8 p.m.
Sat. 8:30 a.m. - 5 p.m.

Pine Plaza • 629-6711

County Human Services

Pine County Department of Human services is located in the courthouse. There is also a branch office in the city hall in Sandstone.

The department is organized into five program units: Adult Services, Children Services, Income Maintenance, Child Support Enforcement and Administrative Services. In addition, the department funds more than a dozen community based services, among them Five County Mental Health Center, Pine County Development Achievement Center, Grindstone Lodge, Pine Shores Chemical Dependency Services, Therapeutic Services Agency, St. Croix Camps, Community Involvement Programs, Private Industry Council Five, Pine County Home Health Care and Homemaker Services and area nursing homes.

The adult services unit is located in Sandstone City Hall. The unit provides mental health, developmental disabilities, chemical dependence and adult foster care services, in addition to pre-admission screening and alternate care. The unit's mission is prevent the exploitation of vulnerable adults.

Children Services is in the courthouse. The unit provides child protection, foster care, day care, minor mother and supportive services.

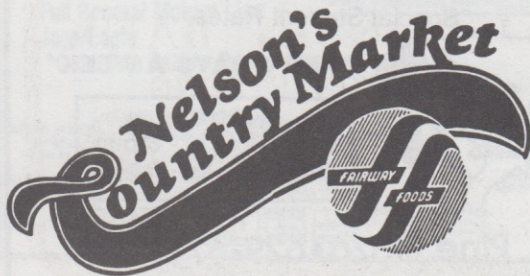
The Child Support Enforcement unit establishes and enforces child support orders, including the establishment of paternity and wage withholding orders. The unit is also involved in collections.

The Income Maintenance Unit administers federal and state welfare programs, including Aid to Families with Dependent Children, General Assistance, Food Stamps and Medical Assistance. In addition to those programs, the unit contracts with the Private Industry Council for a wide variety of employment assistance programs. Those programs are located at Pine Technical College.

In total, the department administers more than \$10 million in federal, state and local social service and financial assistance programs. Nearly all of the programs are mandated by federal or state laws. For more information, call 629-6781.



Great prices are just the start



FRESH MEATS & PRODUCE
•FULL SERVICE DELI
& BAKERY
•MOVIE RENTALS

Pine City-629-2589-7 a.m.- 9 p.m. Everyday

Hur
pho

ADMINIS
MAINTEN

Pine
Finan
Medic
USDA
Child
Welfa

SANDST
SERVIC

Adop
Coun
Devel
Educa
Empl
Famili
Foste
Healt
Home
info
Prote
Sub-a
MR G
Prote
Resid
Emoti
Prima
(Ch
Halfw
Corre
MR C
Trans

Servi

Eas

Human services phone numbers

ADMINISTRATION & HOME MAINTENANCE

Pine County Courthouse612-629-6781
Financial Assistance, ext. 186-87
Medical Assistance, ext. 168
USDA Food Stamps, ext. 186-87
Child Support Services, ext. 176
Welfare Fraud Investigator, ext. 175

SANDSTONE OFFICE OF SOCIAL SERVICES612-245-2268

Adoption
Counseling
Developmental Achievement Centers
Educational Assistance
Employability
Family Planning
Foster Care
Health
Homemaker-child and adult protection
information and referral
Protection (adult)
Sub-acute detoxification
MR Guardianship
Protection (children)
Residential Treatment
Emotionally disturbed children
Primary Treatment/Extended Rehabilitation
(Chemical dependency)
Halfway House
Correctional (children)
MR Children
Transportation

Serving East Central Minnesota
and the Pine City area

Over 32 basic channels

Call 1-800-642-2648

CITATION CABLE

Big town service for smaller
East Central Minnesota Communities



**FROM GAS
TO GROCERY
STORE**

**OPEN
24 HOURS
EVERY DAY**

Greyhound Bus Stop
•Propane available-RV dump station
•Hot and Cold Deli
 PINE CITY•629-3011

Roubinek Motors


**825 6th Street
Pine City**

* Tires * Batteries * Brakes * Alignments * Engine Repair * 4x4 Repair * Transmission overhaul * Exhaust Repair	* Headlight Adjustment * Carburetor Repair * Air Conditioning * Tuneup * Alternator & Starter Repair * Computer Diagnosis
--------------------------------------------------------------------------------------------------------------------------------------	---------------------------------------------------------------------------------------------------------------------------------------------

629-3661

"A Strong Progressive
Full Service Bank
Dedicated To
Progress In The Area
We Serve"



**FIRST
WISCONSIN BANK**

105 MILLION STRONG

Grantsburg463-5301
Siren.....349-2440
Webster866-4251
Cushing.....648-5217
A&H.....635-2148



Agencies

Whatever the question or type of assistance needed, there is an agency in Pine County prepared to help.

AGRICULTURE EXTENSION SERVICE

Janet Rathke384-6156
Steve Draskowski384-6156

ALCOHOLISM/CHEMICAL DEPENDENCY

Al Witucki, counselor.....629-6781, ext. 159
Alcoholics AnonymousPine City, 629-3373
Sandstone, 245-2231
Pine Shores, Pine City.....629-6769

ALANON & ALATEEN

For family of Alcoholic.....629-3407
Youth court services629-6781, ext. 160
Family health clinics.....629-6721
245-2232
384-6144
Pine Shores.....629-6769

BIRTH CONTROL/PREGNANCY/ VENEREAL DISEASE

Public Health Nurse
Virginia Rootkie.....629-6781, ext. 166
Crisis Pregnancy Center.....629-2792

CIVIL DEFENSE

Steve Johnson.....384-6110

CLOTHING CENTERS

Used clothing is available at reasonable cost through Lakes and Pines Clothing Bus on food stamp days in Pine City, Hinckley and Sandstone.

EMPLOYMENT COUNSELING/TRAINING

Vocational Rehabilitation.....
.....Cambridge, 689-3250
Job Service.....Mora, 612-679-3611
.....Cambridge, 612-689-1931
Social Services.....Sandstone, 245-2268
Pine Technical College.....612-629-6764

FAMILY/MARRIAGE/INDIVIDUAL PROBLEMS

Social Services.....Sandstone, 612-245-2268
Family Health Clinics.....629-6721
384-6144
245-2232
Mental Health Association.....629-3282
Human Development Program.....
.....Braham, 612-396-3333
Public Health Nurse629-6781, ext. 166

FINANCIAL HELP

County Human Services ..Pine City, 629-6781
Red Cross.....Sandstone, 245-2392
Salvation ArmyFinlayson, 233-7575
Hinckley, 384-6108
Pine City, 629-2362
Askov, 838-4500
Lakes & Pines Community Action Council
1-800-832-6082
612-679-1800

LOW COST HOUSING

Pine City (elderly)629-6301
Pine City.....612-464-4600
Sandstone.....612-464-4600
Finlayson.....612-464-4600

SENIOR CITIZEN CLUBS/SERVICES

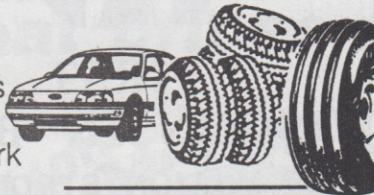
Askov.....838-4760
Bruno.....838-2293
Finlayson.....233-7645
Hinckley.....384-6308
Kerrick.....496-2348
Pine City.....629-3952
Sandstone.....245-2697
Willow River.....372-3440
Other.....629-2544

SUPPORT SERVICES FOR VICTIMS

Alliance for Mentally Ill629-3193
Cancer Support Group.....679-1212
Caregiver Support Group.....629-6781
WINDOW838-3149
Hospice Caregivers358-4708
Grief Group629-6781
Environmental Illness
Support Group.....629-6364

BILL'S TIRES AND REPAIRS

- Oil Changes
- Grease Jobs
- Tire Repairs
- Exhaust Work
- and other minor repairs



**MANY TIRE SIZES
AVAILABLE**

OPEN MON-FRI., 9-5, SAT. 9-1 OR
EVENINGS BY APPOINTMENT

1 block north of the Old Depot in the Old Schmidt
Warehouse-PINE CITY • 629-7253

•Daily Specials

•Weekly Breakfast Special



OPEN 7 DAYS
A WEEK

Aunt Jane's
61 WAY CAFE

Pine City-629-3580



PINE TECHNICAL COLLEGE

Educational opportunities

Education is a top priority in Pine City, as its modern school facilities and innovative classes prove. There are about 1,700 students enrolled in kindergarten through 12th grade.

The Pine City Elementary School is on 6th St in the downtown area. The school is an attractive and functional learning center for students in kindergarten through sixth grade.

The junior and senior high school building completed in the winter of 1985, has improved the educational options and the learning atmosphere for students.

Situated on the south end of Pine City, the school also houses the school district offices. A football field, tennis courts and softball field on the site have allowed the district to centralize its educational and extracurricular activities.

A two-way interactive cable system joins the Pine City school to other schools in east central Minnesota. Students are able to take courses via cable which are not offered in the home district, making it possible to offer a wide range of classes.

Grades one through six are also taught at St. Mary's Catholic School on West 6th Ave, close to Pine City Elementary School.

St. Mary's welcomes students of all denominations. Religious classes are part of the school curriculum, with Father Lyons visiting weekly to provide instruction. The school cooperates with the public school for a hot lunch

program, computer classes, special education, band and other extracurricular activities. Karen Anderson is the principal.

Pine Technical College, one of Minnesota's 34 technical college campuses, offers diploma programs in several business and technical career fields. Students may attend on a full or part-time basis. PTC's Extension Training Services and Management Programs also provide customized training, classes, short courses, seminars and workshops in business, industry, health and human services.

A community education program is offered through the public school system. Community education offers a wide variety of classes and activities for residents of all ages in the Pine City School District.

Included in the community education program is Early Childhood Family Education. Classes and activities are held in a newly decorated Early Childhood Activity Center behind Pine Technical College. The program offers parent-child sessions, activity classes, field trips, young parent classes and drop-in play times. ECFE is open to families with children from birth to kindergarten. For information contact Tammy Kraft at 629-6764, ext. 144.

See Education, Page 18

Education

Continued from Page 17

Head Start is a program for qualifying preschool age children. It is funded by Lakes and Pines (CAC) and is in its 11th year. It is one of the only home-based education programs in the nation.

Head Start uses community resources in its education program. Children are taken on tours of the fire department, library, hospital and other places of interest.

Another option for younger children is the Pine City Cooperative Nursery School. Sessions held in the little red school house include enrichment programs for preschool children to help them learn basic skills. A certified teacher runs the programs, under the guidance of a board of directors. The board is made up of parents who send their children to the school. Parents also participate in school operations. Contact Nancy Anderson at 629-2255 for more information.

Full Line of General Electric Products



- RANGES
- REFRIGERATORS
- WASHERS & DRYERS
- FREEZERS
- DISHWASHERS

Gahler Appliances

Pine City • 629-2596
OPEN Mon.-Fri 9-5, Sat. 9-12

CINDY & CO. HAIR DESIGNS



- Precision Haircutting
- Personalized Hairstyling
- Creative Haircoloring
- Design Perming
- Manicures
- Lady-Fingers Artificial Nails
- Facials
- Make-Up Application

Open Mon.-Sat. • 629-7472 • Pine City

EDUCATION FOR EMPLOYMENT

DIPLOMA PROGRAMS-

- Accounting • Administrative Support Careers
- Business Microcomputing • Automotive Technology
- Machine Tool • Gunsmithing • Locksmithing • Taxidermy

MANAGEMENT PROGRAMS-

- Small Business • Farm Business
- Lamb & Wool Management

FULL OR PART-TIME

Child care, financial aid, career counseling and tutoring are also available

1-800-521-PINE



**PINE
TECHNICAL
COLLEGE**



1000 4th Street Pine City, MN 55063

(612) 629-6764 Metro (612) 332-2118

Minnesota Technical College System

Equal Opportunity Educator/Employer

School administrators

SUPERINTENDENT

Joe Hobson629-7511

SENIOR HIGH PRINCIPAL

Don Lund629-7511

JUNIOR HIGH PRINCIPAL

George Johnson629-7511

ELEMENTARY PRINCIPAL

Rick Houston629-7526

COMMUNITY EDUCATION

Andy Rohweder629-7511

ATHLETIC DIRECTOR

Andy Rohweder629-7511

CURRICULUM COORDINATOR

Candy Ames629-7511

PINE TECHNICAL COLLEGE DIRECTOR

Gene Biever629-6764

ASSISTANT DIRECTOR

DIRECTOR OF EXTENSION TRAINING SERVICES

Jerry Delac629-6764

STUDENT SERVICES

Jay Hutchins629-6764

SPECIAL NEEDS COORDINATOR

Howie Anderson629-6764

BUSINESS AND FINANCIAL AIDS

Arnold Feist629-6764

SCHOOL BOARD

Paul Janssen629-2209

Doug Anderson629-3510

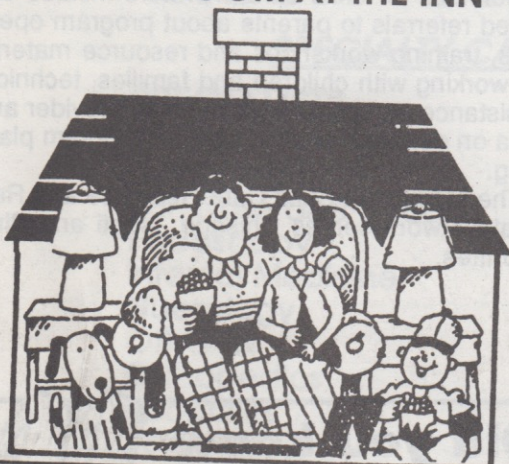
John Woll629-2016

Robert Shuey629-2129

Debbie Bombard629-7426

Dan Peterson629-2610

OVERFLOWING WITH GUESTS? THERE IS ROOM AT THE INN



- 20 Air Conditioned Units
- Major Credit Cards
- Near Golf Course, Shopping & Restaurants
- Cable TV FREE • Disney Channel
- Handicapped Accessible Room
- Non-Smoking Rooms Available



Schwartzwald Motel

6 blocks East of Pine City Exit I-35
Betty Griffin-612-629-2511

PROBLEM WATER? SOLUTION CULLIGAN.

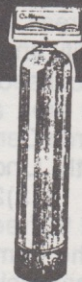
- | | |
|----------------------------------------------|------------------------------------------------|
| <input type="checkbox"/> Bad Taste or Odor | <input type="checkbox"/> Corrosion of Plumbing |
| <input type="checkbox"/> Red or Black Stains | <input type="checkbox"/> Colored Water |
| <input type="checkbox"/> Cloudy, Hazy Water | |

We have the technology, equipment, and capabilities to solve water problems like these. Call your Culligan Man.

KEY
CULLIGAN
MAN

Culligan.
Trust The Experts

Serving East Central Minnesota
325 W. 4th St.
Rush City
358-3685-800-955-3685



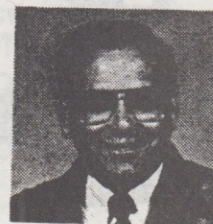
for
SALE

**Stoffel
Realty**
629-6966



705 Hillside Ave.
Pine City

Call for all your
real estate
needs



HOME GROWN
18 YEARS EXPERIENCE
DAVE STOFFEL
629-6966



THE LICENSED DAY CARE options in Pine City are many, and working parents can be confident their children are care for by loving and qualified providers.

Day care options plentiful

Working parents rely on licensed day care centers for the safety and wellbeing of their children while they are away at work.

The availability of quality day care is a prime consideration for industry looking to locate in rural areas, and Pine City is not found lacking in the quality and quantity of its centers.

Licensed day care center referrals in the Pine City area are handled through the Family Resource Center, P.O. Box 836, 30620 Olinda Trail North, Lindstrom, MN. 55045. Phone numbers are (612)257-2400, (612)674-4433 ext. 360 and tollfree 1-800-422-0620.

The Family Resource Center provides professional assistance in evaluating child care needs. Current and detailed information on child care

options include licensed day care centers, licensed family day care homes, licensed nursery schools, Head Start programs, before and after school programs, summer programs for children and resources for finding an in-home sitter.

Services for child care providers include updated referrals to parents about program openings, training workshops and resource material on working with children and families, technical assistance on becoming a licensed provider and data on demand for child care for program planning.

The Minnesota Child Care Resource and Referral Network serves Chisago, Isanti and Pine counties.



*The feeling
never
ends.™*

THE FLOWER BOX

Flowers for all occasions

Richard & Cindy Novy

1/2 Block N. of Stoplight, Pine City-629-2045

**Did you know
we have
new and used tires**



Small batteries for farm equipment-6, 8, & 12 volt

•We also carry batteries for most cars and trucks

*New and used car and pickup parts

•New and used steel, plates, angles, flats, pipe, tubing

We also have in stock Airco Welding Products

STAN & GENE'S SALVAGE & STEEL

Hwy. 61 N of Pine City-629-2030

Mon.-Fri. 8-5, Saturdays 8-12

COMPREHENSIVE FAMILY HEALTH CARE

TIMOTHY NOVICK, M.D., FAMILY MEDICINE
JAMES LAURINO, M.D., FAMILY MEDICINE AND SURGERY
GREG CARLTON, M.D., INTERNAL MEDICINE/CARDIOLOGY
JAN BENNETT, NURSE PRACTITIONER
RAJENDRA SHETH MD., FAMILY MEDICINE

CLINIC HOURS-Monday thru Friday 9 a.m. - 5 p.m.

RUSH CITY AREA CLINIC

RUSH CITY • 358-4784

780 West Fourth Street, Rush City (adjacent to the Rush City Hospital)

RUSH CITY HOSPITAL

SPECIALTY CARE WITHOUT THE DRIVE

SPECIALISTS

Cardiologist
Ear, Nose and Throat
Endoscopy
Internal Medicine
Neurology
OB-GYN
Orthopedics
Pediatrics
Podiatry
Radiology
Surgery
Urology

SERVICES

Ultra Sound
Audiology Service
Children's Care
Coronary Care
Diabetic Consultation
Emergency Service
Laboratory
Mammography
Maternity Care
Nuclear Medicine
Occupational Therapy
Physical Therapy
Radiology
Speech Therapy
Stress Testing
Surgical Care

358-4708

VISITING HOURS
11:00 AM - 8:30 PM

760 W. 4th St.
1/2 mile East of I-35 on Hwy. 361

Health care options

Health care is readily available for whatever is ailing Pine City residents and visitors both at the Pine City Area Clinic and the Mora Medical Center in Pine City.

Among the physicians employed through the Pine City Area Clinic are Dr. F. Partida and Dr. G. Tolan.

Pine City Area Clinic also has several specialists in various areas of health care who visit on varying schedules. It also has a family counselor, Glen Larson.

Pine City Area Clinic hours are Monday through Friday from 9 a.m. to 4:30 p.m. On Saturday, the clinic is open at varied hours. Appointments can be made by calling **629-6721**.

At the satellite clinic of the Mora Medical Center in Pine City, the hours are from 9 a.m. to 4:30 p.m. Monday through Friday. Appointments can be made by calling **629-7505**.

Physicians working for the Mora Medical Center at its Pine City clinic are Dr. Larry Brettingen, Dr. Terry Johnson, Dr. Mark Hruby, Lyle Visser, family counselor, Dr. Jan Fleming, Dr. R. Bostrom and Karen Rasmusson, OB/GYN Nurse Practitioner.

Other clinics which serve the residents of the

Pine City area are:

The Cambridge Clinic, **1-689-1411**.

Rush City Area Clinic, **358-4784**.

Grantsburg Clinic, just across the St. Croix River in Grantsburg, WI, can be reached by calling **1-715-463-5317** or tollfree from Minnesota, **1-800-637-7187**.

Hospitals

Five hospitals, one in Pine County, give Pine City residents ample choice regarding health care.

The North Pine Area Hospital in Sandstone
.....1-245-2212.

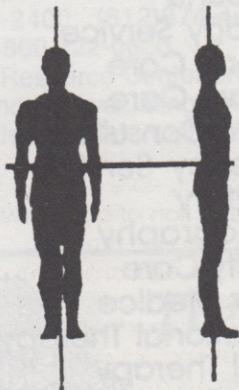
Kanabec Hospital in Mora1-679-1212

Cambridge Memorial Hospital.....1-689-1500.

Burnett General Hospital in Grantsburg, WI
.....1-715-463-5353

Rush City Hospital.....358-4708

PINE CITY CHIROPRACTIC OFFICE



DR. JOHN L. KNOX

Chiropractor

S. Hwy. 61, Pine City

•Workers Compensation

•Auto•Medicare

•Health Insurance

629-6717

GRANTSBURG CLINIC

513 South Parkview Drive
GRANTSBURG, WI 54840

JAY P. KEEPMAN, MD.

BLAISE VITALE, MD.

GREGORY SCHISSEL, MD.

PATRICIA EID, NURSE PRACTITIONER

SUSAN KJEER, NURSE PRACTITIONER

Board Certified
Family Physicians
Providing a Full
Range of
Medical Services



CLINIC
HOURS:
M-F 8 a.m.-5 p.m.

TOLL FREE
1-800-637-7187

Grantsburg 1-715-463-5317

Webster 1-715-866-4271

Vision care

Vision and eye health care is easy to come by in Pine City, and the quality is comparable to that found in much larger cities.

Pine City Eye Clinic is staffed by professional optometrist Dr. Dan Dieterichs. The clinic in downtown Pine City at 645 W. Third Ave., is a modern facility, with the latest in examination equipment.

Family vision care and eye health examinations are conducted and contact lenses and all specialty lenses are prescribed through the clinic. Pediatric vision care and safety and sports eyewear are other services provided.

Eyeglass Express is located in the Pine City Eye Clinic and offers quality eyewear for all needs. Consultations for special needs and accessories in eyewear and contact lenses are available.

Open evenings and Saturdays by appointment, the clinic can be reached by calling 629-2531.



MORA
MEDICAL CENTER, LTD
224 Seventh Street
MORA, MINNESOTA 55051

FAMILY PRACTICE

L.J. Brettingen, M.D.	J. L. Wilson, M.D.
P.J. Donner, M.D.	R.A. Bostrom, M.D.
M.R. Hruby, M.D.	Karen Rasmusson, OB/GYN. N.P.
R.K. Menk, M.D.	Lyle Visser, Family Counseling
T.A. Johnson, M.D.	Judy Stolquist, Clinic Manager
T.J. Thiel, M.D.	

Telephone answered 24 hours a day at the
MORA OFFICE-679-1313

SPECIALISTS

J.L. Fleming, M.D., Internal Medicine
D. Dorn, M.D., Neurology
D. Anderson, M.D., Orthopedic Surgery
J.B. Luneth, M.D. Surgery
S.W. Laggard, M.D., Orthopedic
J.Lesser, M.D., Cardiology
C.P. Ehlen, M.D., Urology
R. Nelson, M.D., Cardiology
C.A. Brown, M.D., Otolaryngology
R. Johnson, M.D., Neurology

Participating with: BCBSM-Senior Gold, Aware Gold, Physicians Health Plan, HMO Minnesota, Preferred One

SATELLITE CLINICS

Hinckley Office-384-6189•302 Fire Monument Rd.
Pine City Office-629-7505•220 E. 3 Ave.

PINE CITY EYE CLINIC

DR. DAN DIETERICHS

- Professional Family Eye Care
- Complete Eye Health Services including Cataracts & Glaucoma
- Comprehensive Contact Lens Care
- Pediatrics•Emergency Services
- Same Day Contact Lens Replacement

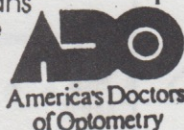
**"We Specialize in
Service and Caring"**

**EVENING AND SATURDAY
APPOINTMENTS AVAILABLE**

Participating Providers:

Aware Gold, Medica, Preferred Gold, Medicare, Medical Assistance, Blue Plus, Medcenter Health Plan, Senior Gold and Major Medical Health Plans Preferred One, Select Care

**645 W. Third Ave.
629-2531**



EYEGLASS Express

- Emergency eye glass service-our Cambridge laboratory can produce bifocals, trifocals and progressive no- lines in one hour!
- Great selection of quality eyewear- Largest in the area
- Safety, sports and children's eyewear
- The best warranty on glasses available
- Consultation for lens needs-no-line bifocals, occupational lens and specials
- We guarantee in writing the best value and cost in glasses-

**ECONOMY PACKAGES START AT \$69.95,
FRAME AND LENS COMPLETE**

- Senior, Medica, Blue Cross Plan eyewear discounts.

**CONVENIENTLY LOCATED
IN THE PINE CITY EYE CLINIC**

Chiropractors

Chiropractors play an important role in the area's health care service package, with two skilled doctors serving the Pine City area.

Dr. John L. Knox can be reached at his office on Highway 61 south by calling 629-6717.

Dr. Joseph Nilsson has his office in the downtown business district at 253 5th St. The phone number is 629-2740.

Chiropractic can be effective for many lower back problems, neck disorders, headache conditions, and whiplash symptoms, among others.

Dentists

Two dental clinics in Pine City serve the needs of area residents.

Dr. Steven Eck practices in the Pine City Area Clinic building attached to Lakeside Nursing Home on East 6th Ave.

To make an appointment, call 629-2282.

Dr. Byron Mach and Dr. A.D. Romano have their dental clinic at 705 West 5th Ave. in Pine City. Appointments can be made by calling 629-3433.

Emergency numbers

Fire, police, rescue-ambulance

Emergency calls only 911

Pine County Sheriff's Department

Emergency 911 or 629-3930

Non-Emergency 629-6781

Pine County Conservation Officer

Peter Jensen 384-7581

Pine City Clinics

Pine City Area Clinic 629-6721

Mora Medical Center, Pine City 629-7505

Hospitals

Cambridge Memorial 689-1500

Kanabec Hospital 679-1212

Rush City Hospital 358-4708

Burnett General Hospital 715-463-5353

Sandstone Area Hospital 245-2212

Minnesota State Patrol

Emergency only -- Call the operator, ask for Zenith 7000.

Minnesota State Patrol

Information -- Duluth 218-723-4887

Brainerd 218-828-2400

Minnesota Poison Control Center

..... 1-800-222-1222

LAKESIDE MEDICAL CENTER



OVERLOOKING BEAUTIFUL CROSS LAKE

***Respite Care
Available**

***Out-Patient
Physical Therapy
and Occupational
Therapy**

129 East 6th. Ave., Pine City
629-2542

**VISITORS ARE WELCOME TO
INSPECT OUR FACILITIES**



Pine City Area Clinic

***F. Partida, M.D.**

***G. Tolan, D.O.**

***Glenn Larsen, Counselor**

**HOURS:
Mon. - Fri. - 9-4:30
Saturday - 9-12**

629-6721

**510 2nd. Street,
Pine City**



We've shortened the road to cancer care.

Fighting cancer is one of the biggest challenges a person can face. We are making that battle easier. Cancer Link Community Clinic has doctors, nurses, and pharmacists specially trained in treating cancer. Now cancer patients won't have to travel to a major medical center for health care. Quality cancer care is available right here, in Kanabec County.

Cancer Link Community Clinic

A service of

KANABEC HOSPITAL

For Your Good Health!

679-1212

Services for senior citizens

Pine City senior citizens are always busy at the senior center.

Located on 6th St., across from the elementary school, the building is handicapped accessible and has been remodeled to accommodate a variety of activities. A kitchen allows the noon congregate dining program to operate efficiently at the center and makes serving small lunches convenient during other events.

Card games and bingo are weekly activities at the senior center, and it's a nice place to go just to visit.

NUTRITION CENTER: Hot, nutritious noon meals are offered Monday through Friday at the Pine City Senior Center. The meals are served in a group setting, giving seniors the opportunity to socialize.

The only requirement to participate in the program is the person be 60 years of age or older, and they must phone in their reservation for lunch one day in advance. A \$1.25 or more donation is suggested and encouraged. Spouses of any age may accompany those who are eligible for the program. Guests under age 60 pay \$2.40.

Home delivered meals are available to seniors who are unable, for medical or other reasons, to get to the center or prepare a meal for themselves.

Menus for each week are printed in the Pine City Pioneer. Anyone who qualifies and is interested in the Nutrition Center program can reserve a meal or get more information by calling 629-3024 between 10:30 a.m. and 1 p.m. Geri Othoudt is the director.

HOME NURSING CARE: Homebound senior citizens who need professional nursing care, help with physical therapy, housekeeping assistance or personal care may have the services provided through the county nurse's office. Services are available from 8 a.m. to 4:30 p.m. Monday through Friday, Director Virginia Rootkie can furnish more information about this service. Her phone number is 629-6781.

HEALTH CARE: The Seven County Senior Federation in Mora, which serves the Pine City area will help senior citizens participate in some health care services.

Dental, podiatry, chiropractic and optometric services are available through the federation. Some programs have income guidelines, some are limited to number enrolled and some require medical cards be presented when treatment is given.

To learn how to participate in these services contact the Seven County Senior Federation, Box 45, Mora, 55051. The phone number is 679-4700.

TRANSPORTATION: The Pine County Citizens Committee on Aging plans transportation services for senior citizens in the county. The group meets on the second Monday of each month at different senior centers in the county.

A mini bus provides transportation to medical facilities in the Twin Cities and Duluth. It can be used by people 55 years and older.

To find out the monthly schedule of the minibus trips contact Val Anderson, 245-2788, or driver Judy Broman at 629-3455. Schedules are also posted at the Pine City Senior Center, and Lakeside Nursing Home, which uses the minibus services.

Veterans can use a van service arranged especially for them by veterans service officer Steve Johnson.

A van leaves the Red Shed Restaurant in Pine City on several days each month to take vets to medical appointments at the VA Hospital in Minneapolis. Departure time from Pine City is 7 a.m.

The cost is \$10 per person round trip. Contact Johnson, 612-384-6110, to find out the bus schedule and to make a reservation.

The 10-passenger van, was donated to the county by the Pine City American Legion.

The City of Pine City through Hunt's Bus Company also makes in-town transportation available to senior citizens. A bus will pick passengers up at all of the senior apartment complexes and also at individual homes in the city if notified in advance. The bus operates from 10 a.m. - 1 p.m. on Tuesday and Friday of each week to allow seniors to do shopping or keep local medical appointments. For more information call Hunt's Bus Company, 629-2032.

NURSING HOME: Skilled and intermediate care to seniors who need it is available at Lakeside Nursing Home.

It is licensed for 135 beds and has seven private rooms. A craft room, conference room, multipurpose room, beauty shop and day rooms all add to the residents' enjoyment of the home.

Religious services for all denominations are offered at Lakeside. A fulltime dietary supervisor is on duty, and a physical therapist is provided regularly. Dentists and optometrists visit on request.

For more information on Lakeside Nursing Home contact the home at 612-629-2542.

Sandstone Area Nursing Home also serves residents in the Pine City area with its 86 bed facility. It has four private rooms, offers physical therapy, activities and an on-site eye clinic. Skilled care is provided. For information on the home call 612-245-2224.

Vet

Any ty
license
center

The
There
the licen
cycle or
office of

Huntin
be purch
stores a

Office
through
given o
in the o
Building

Appli
road te
reache
cancel

Thos
rary lice
four to

Vehic
center
needs
insuran

To o
and ot
numbe
is cover

Lib

The
East C
Camb

Loca
is ope
p.m.
p.m. a

Libr
swers
many

As p
system
fered.
tensiv
able

For
typew
use a

Vehicle licenses, passports

Any type of motor vehicle license or sporting license can be purchased at Pine City's license center.

The office is at 445 6th St. in Pine City.

There's no need to wait for the state to send the license for your car, truck, RV, boat trailer, cycle or snowmobile. They're all available at the office of the deputy registrar.

Hunting, fishing and trapping licenses can also be purchased there, as well as at the hardware stores and bait stores.

Office hours are from 9 a.m. to 5 p.m. Monday through Friday. Written driver's license tests are given on Mondays at 10 a.m. and again at 2 p.m. in the community room of the Pine City Municipal Building.

Applicants must arrange, in person, to take the road test. The license examiner cannot be reached by phone to make appointments or to cancel them.

Those who pass the test are issued a temporary license until the permanent license arrives in four to six weeks.

Vehicle title transfers are done at the license center on 6th St. To transfer a title, the owner needs to bring a certificate of title with him, his insurance number and driver's license.

To obtain a license on an automobile, truck and other vehicles, the owner must have the number of the insurance policy under which he is covered.

In order to travel abroad, you will need a U.S. passport and sometimes a visa, depending upon what countries you plan to visit.

Passport applications can be obtained from the court administrator in the courthouse in Pine City. They are processed in Seattle, WA and will take about three weeks to arrive.

You must show proof of citizenship, and instant passport photographs are available from several local photographers.

A traveler must apply for a visa to the consulate Office of the country he will visit. A listing of countries that require a visa is available from the clerk of court.

It usually takes longer to obtain a visa, and travelers should be specific about the time they intend to spend in certain countries as visas are dated and only good for a certain length of time.

A professional travel agent will usually take care of these details for a client, but if you are planning to travel on your own it's well to make plans in advance.

Certain countries also require special immunization shots before you can enter. It would be wise to consider certain shots whether required or not.

International driver's licenses can be purchased through your local AAA office, not through local license centers.

Library offers many services

The Pine City Public Library is a branch of the East Central Regional Library headquartered in Cambridge.

Located in Pine City Hall on 5th St., the library is open Tuesday, Thursday and Friday from 1 p.m. to 6 p.m., Wednesdays from 1 p.m. to 7:30 p.m. and Saturday from 10 a.m. to 2 p.m.

Librarian Sue Sharp is a ready source of answers to any questions regarding the library's many services.

As part of the East Central Regional Library system, a special reference service can be offered. Interlibrary book loan service and an extensive collection of large print books are available.

For a nominal fee the library has computers, typewriters, a fax machine and a copier for public use at the library. A VCR, slide projector, 16mm

projector and compact disc player, along with video tapes and compact discs, are at the disposal of Pine City residents through the library, as is a microfiche catalog. The library also has a microfilm reader and film of old local newspapers.

During the course of the year the library is the site for many special programs for children and adults in the community, including the summer reading programs and story hours.

The library board cooperates with the Pine City Arts Council to allow the library to serve as the showcase for work entered in art contests offered by the council. All are attempts by the library staff and its patrons to help community members become acquainted with all the library has to offer.

For more information call the library at 629-6403.

Churches

FIRST ASSEMBLY OF GOD CHURCH: Rev. Ted Graf. Wednesday, Adult Bible Study, all year, Christ's Ambassadors, Missionettes, Royal Rangers, September through May, 7:15 p.m. Sunday School for all ages 9:30 a.m. Morning Worship, 8:00 a.m., Evening Service, 7 p.m.

GRACE BAPTIST CHURCH OF PINE CITY: Rev. Robert Oman. Sunday School, 9:45 a.m. Morning Worship Service, 11 a.m. Evening Service, 6 p.m.

GRASSTON BAPTIST CHURCH: Rev. Mark Aurand. Sunday School, 9:45 a.m. Morning worship service, 11 a.m. Evening Service, 2nd and 4th Sundays, 7:00 p.m. AWANA program, Wednesday, 7:00 p.m.

IMMACULATE CONCEPTION CATHOLIC: Father Michael Lyons. Saturday Mass, 5 p.m. Sunday Masses, 8 and 10 a.m.

ST. JOSEPH'S CATHOLIC, BEROUN: Father James Scheuer. Sunday Mass, 10:30 a.m.

CHURCH OF CHRIST: Sunday Bible Study, 10 a.m. Worship Service, 11 a.m. Evening Service, 4 p.m. Wednesday Bible Study, 7:00 p.m.

FIRST ASSEMBLY OF GOD INVITES YOU TO WORSHIP

•**Sunday Morning Worship**
8:00 a.m. and 10:30 a.m.

•**Sunday School** for all ages 9:30 a.m.

•**Sunday Evening Service** 7:00 p.m.

•**WEDNESDAY NIGHT
FAMILY NIGHT 7:15 PM**

•Adult Bible Study all year

•Youth Groups September to May

•Christ's Ambassadors (high school)

•Royal Rangers (boys 5 years to 14 years)

•Missionettes (girls 5 years to 14 years)

•Rainbows (children 3 and 4 years)

**NURSERY CARE AVAILABLE
AT ALL SERVICES**

**WE ARE A
CARING CHURCH!!!
PASTOR TED GRAF 629-6136**

EVANGELICAL FREE CHURCH: Pastor Keith Jeske. Sunday School for all ages, 9:45 a.m. Morning Worship, 8:30 a.m. and 11:00 a.m. Evening Service, 7:00 p.m. Wednesday Prayer Meeting and Bible Study, 7:00 p.m. AWANA and Young Redeemed 7:00 p.m.

HUSTLETOWN COMMUNITY CHURCH: Pastor Marvin Nelson. Sunday School, 10 a.m. Worship Service, 11 a.m.

ABIDING IN THE VINE LUTHERAN FELLOWSHIP (AFLC): Pastor Ralph Tjelta. Meeting at Pine Technical college Auditorium, Sunday School, 8:45 a.m. Morning Worship, 10:00 a.m. Wednesday Bible Study, 7:30 p.m.

HOPE LUTHERAN CHURCH, GRASSTON: Pastor J. Millard Ahlstrom. Sunday Worship Service, 9:30 a.m. Sunday School, 10:30 a.m.

OUR REDEEMER LUTHERAN CHURCH: Rev. Ken Manfolk, Rev. Peter J. Rosenkvist. Sunday School, 9:00 a.m. and 10:30 a.m. Morning Worship, 9:00 a.m. and 10:30 a.m.

ZION LUTHERAN CHURCH: Pastor Vernon Dorn. Sunday School and Bible Study, 9:05 a.m. Morning Worship, 8:00 a.m. and 10:30 a.m.

HENRIETTE FREE METHODIST CHURCH: pastor Don Parsons. Sunday School, 9:45 a.m. Morning Worship, 11:00 a.m. Evening Service, 7:30 p.m. Wednesday Service, 7:30 p.m.

PINE CITY UNITED METHODIST: Rev. Samuel Kim. Sunday School 9:15 a.m. Morning Worship, 10:30 a.m. Brook Park Service, 9:00 a.m.

FIRST PRESBYTERIAN CHURCH: Rev. Mary Leisman. Sunday School and Adult Study, 9:15 a.m. Morning Worship, 10:30 a.m. First and third Wednesday, Adventure Club (grades 1 through 6), 3:00 p.m. Youth GG, dates announced.

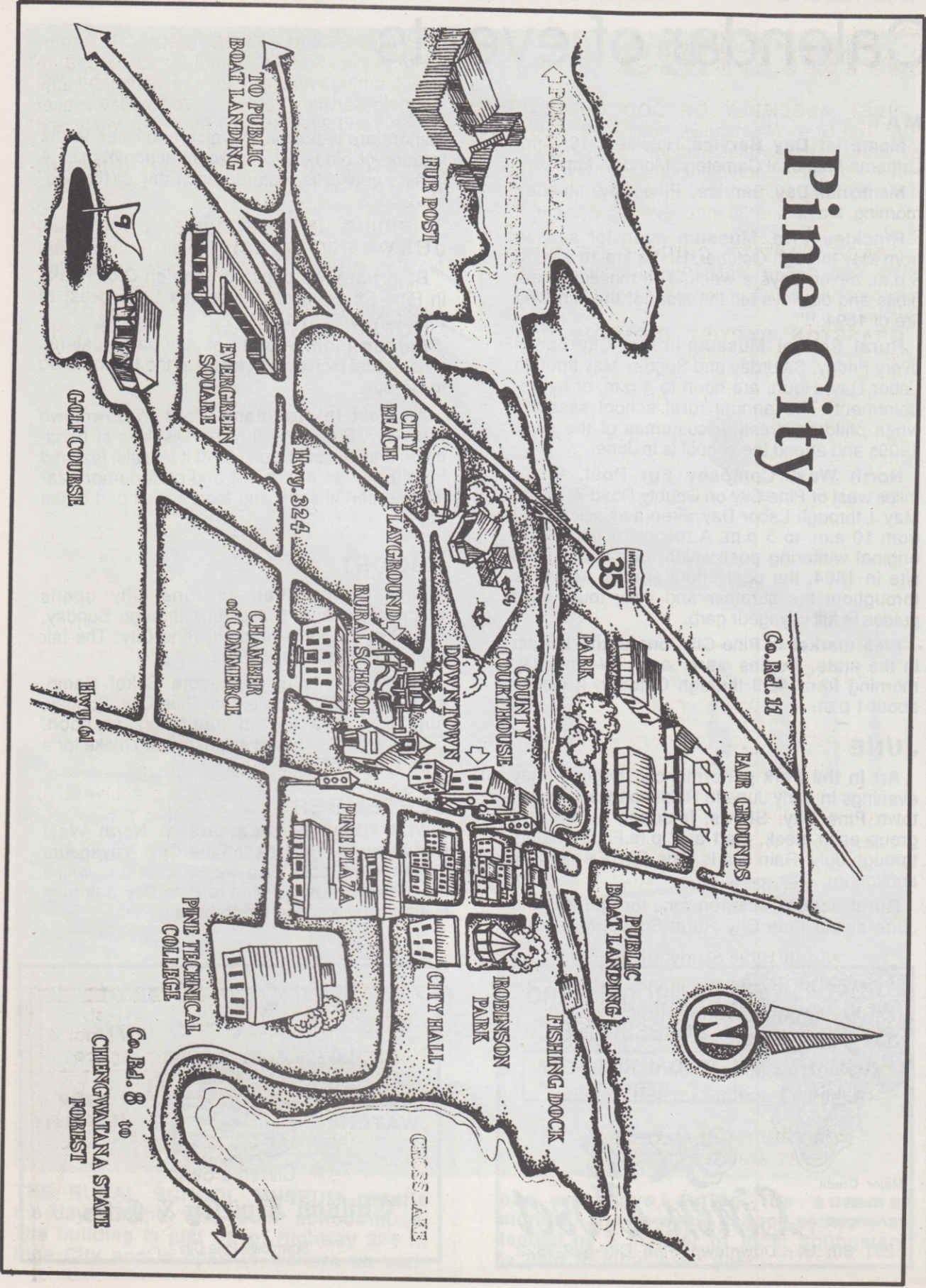


**LAKE
SUPERIOR
LAUNDRY CLEANERS**
OF PINE CITY

Fast,
dependable
service

**PROFESSIONAL
DRY CLEANING**
NOW AVAILABLE AT
JC PENNEY CATALOG STORE
815 6th St. Pine City-629-2596
9-5 M-F, 9-12 Saturday

Pine City



astor
9:45
a.m.
rayer
A and
RCH:
a.m.
RAN
elta.
rium,
ship,
m.
CH,
Sun-
hool,
RAN
er J.
and
and
Ver-
9:05
a.m.
IST
nday
a.m.
Ser-
Rev.
ning
9:00
Rev.
udy,
and
s 1
an-

ble

Calendar of events

MAY

Memorial Day Service, Hinckley, 10 a.m., Lutheran Memorial Cemetery, Monday, May 25.

Memorial Day Service, Pine City, Monday morning, May 25.

Hinckley Fire Museum open for season from May through October. Hours are 10 a.m. to 5 p.m. seven days a week. The museum's exhibits and displays tell the story of the Hinckley fire of 1894.

Rural School Museum in Pine City opens every Friday, Saturday and Sunday May through Labor Day. Hours are noon to 4 p.m. or by appointment. The annual rural school session, when children dress in costumes of the early 1900s and attend the school is in June.

North West Company Fur Post, three miles west of Pine City on County Road 7, opens May 1 through Labor Day. Free admission daily from 10 a.m. to 5 p.m. A reconstruction of the original wintering post which operated on the site in 1804, the post offers special activities throughout the summer and daily tours from guides in full voyageur garb.

Flea market in Pine City, one of the largest in the state, begins early each Wednesday morning from April through October. It closes about 1 p.m.

JUNE

Art in the Park performances begin Friday evenings in early June in Robinson Park, downtown Pine City. Shows, featuring a different group each week, start at 7 p.m. Friday nights through July. Rain site is Pine City Elementary auditorium.

Rural school session runs for one week in June at the Pine City Rural School Museum.

Visitors are welcome to watch and listen to the lessons of old in the one-room schoolhouse. A guest speaker is featured each day of the session.

JULY

Boat parades begin at noon on Cross Lake in Pine City and on Pokegama Lake, west of Pine City, on July 4.

Beroun Lion's Fourth of July party features a hog roast picnic and games at the Legion Club in Beroun.

Art Fest in Robinson Park in downtown Pine City, Saturday, July 18. Displays of hand-made arts and craft work, all of it for sale, featured from 9 a.m. to 4 p.m. Art and craft demonstrations, entertainment and food are all part of the day.

AUGUST

Pine County Fair in Pine City opens Wednesday, Aug. 5 and runs through Sunday, Aug. 9 at the fairgrounds in Pine City. The fair marks its Centennial in 1992.

Booya picnic at Minnesota Sokol Camp, east side of Cross Lake near Pine City, Sunday, Aug. 8. Booya served beginning at noon. Games and Czechoslovakian dancing make for a lively afternoon.

SEPTEMBER

Wild Rice Rendezvous at North West Company Fur Post near Pine City. Voyageurs gather at the post for a weekend of fun, which includes a canoe caravan to Pine City Saturday evening and a concert in Robinson Park.



Special gifts and accessories-

BRIDAL REGISTRY SERVICE

The Linen Closet

Major Credit Cards Accepted

251 5th St., Downtown Pine City-629-3822

*We're Your Home of
Fine Jewelry & Gifts*

FINE EXPERT JEWELRY & WATCH REPAIRS

**DIAMOND
WATCHES**



**FINE
JEWELRY**

Citizen & Seiko

Chilson Jewelry & Gifts

Downtown Pine City

THE
the d
The b
Pine C

en to the
house. A
the ses-

ss Lake
west of

features
ion Club

owntown
of hand-
featured
monstra-
rt of the

opens
Sunday,
The fair

Camp,
Sunday,
noon.
e for a

h West
yageurs
, which
aturday

f
s
PAIRS
**FINE
WELRY**

ts



THE RURAL SCHOOL MUSEUM recalls the days of the one-room schoolhouse. The building is just off of Highway 324 in Pine City and is open to visitors on vari-

ous weekdays during the summer months. A one-week school session, attended by a number of local youngsters, is held in June each year.

Church, social, service clubs

AMERICAN LEGION AUXILIARY, BEROUN	
Charlue Hancock	629-3371
AMERICAN LEGION AUXILIARY, PINE CITY	
Rose Hopkins	629-2997
AMERICAN LEGION, BEROUN	
Kenneth Bell	629-3004
AMERICAN LEGION, PINE CITY	
Lewis Hopkins	629-2997
AMERICAN RED CROSS	
Janice Schmidt	245-2244
Robert Walz	257-9410
ARTS COUNCIL	
Pam Jambeck	629-6864
ASSEMBLY OF GOD WOMEN'S MINISTRIES	
JoAnn Graf	629-6935
AWANAS	
Mark and Terri Okeson	629-2060
CHAMBER OF COMMERCE	
Adrienne Roubinek	629-3861
CHENGWATANA RIDERS	
Mary Bobolik	629-6006
CHRISTIAN WOMEN'S CLUB	
Margit Hedberg	358-3109
CROSS LAKE ASSOCIATION	
Gregory Sheehy	629-6470
FRIENDS OF THE FUR POST	
Pat Schifferdecker	629-6356
FUTURE FARMERS OF AMERICA	
Dave Trampe	629-2091
FUTURE HOMEMAKERS OF AMERICA	
Carolyn Tuckner	629-3670
HERITAGE PLAYERS	
Betty Gilbey	358-3533
JAYCEES	
Darla Hall	629-7956
KNIGHTS OF COLUMBUS	
Erwin Stevens, Jr.	629-6294
LIONS, BEROUN	
Raymond Skalicky	629-2454

LIONS, BROOK PARK	
Mel Besser	679-1615
LIONS, PINE CITY	
Richard Allee	629-3881
LIONS, ROCK CREEK	
Eugene Anderson	629-3228
LIONESS, PINE AREA	
Barb Struss	629-6827
MASONS	
Gordon Rupp	629-3467
MINNESOTA AMERICAN BIKERS FOR AWARENESS TRAINING AND EDUCATION (ABATE)	
Marc Kuhne	629-3363
NATIONAL GUARD	
Tom Giese	629-3140
ORDER OF EASTERN STAR	
JoAnn Gross	629-2982
PINE AREA READING COUNCIL	
Darlene Biever	629-3922
PINE CITY SENIOR CITIZENS, INC.	
Viola Baum	629-3123
PINE COUNTY FAIR BOARD	
Ray Wimmer	629-3315
PINE COUNTY TOURISM ASSOCIATION	
Don Stoffel	629-3153
PINE GARDENERS	
Aggie Mansavage	629-3643
POKAGAMA LAKE ASSOCIATION	
Bob Kuehn	629-7262
PRESBYTERIAN WOMEN'S CLUB	
Carol Ward	629-2001
SCOUTS, CUB SCOUTS	
Tom and Pat Chromey	629-6143
SCOUTS, BOY SCOUTS	
Duane Zemek	629-6290
SCOUTS, EXPLORER	
Robert Walz	257-9410
SCOUTS, GIRL SCOUTS	
Olive Welch	629-2485
ST. MARY'S HOME, SCHOOL ASSOCIATION	
Candy Reiser	629-2496
STOP CLUB	
Leila Wallace	629-6130
SNAKE RIVER VALLEY CONSERVATION CLUB	
Harold Kick	629-3886
UNITED METHODIST WOMEN	
Sandra Stanton	629-3949
VFW AUXILIARY	
Verna Carlson	629-3487
VETERANS OF FOREIGN WARS	
James Rarick	629-6890

See Clubs, Page 33



RUSH CITY
358-9996

OPEN
FRIDAY & SATURDAY NIGHT
SATURDAY & SUNDAY AFTERNOON
Call for recorded information & hours
Available for private & birthday parties!

Agricultural organizations

PINE COUNTY EXTENSION SERVICE

Janet Rathke384-6156

Steve Draskowski384-6156

SOIL CONSERVATION SERVICE

Robert Korth384-7431

AG STABILIZATION AND CONSERVATION

Larry Sederstrom384-6178

DHIA

Russ Danson358-4918

PINE COUNTY ADA

Jim Sward629-2435

TRI-COUNTY CATTLEMEN'S

Dave Bernard245-2830

TRI-COUNTY CATTLEWOMEN

Ruth Sikkink384-6647

FARMERS UNION

Bob Pigeon629-2665

SOUTH PINE FARMERS UNION

Jim Sward629-2435

FARM BUREAU

Delphine Johnson629-2655

NATIONAL FARMERS ORGANIZATION

Ed France, Jr.629-3709

DAIRY GOAT ASSOCIATION

Leif Jorgensen245-2176

AGRICULTURAL STABILIZATION COM- MITTEE

Jack Long629-2698

SHEEP PRODUCERS ASSOCIATION

Dave Deutschlander629-2744

SOIL/WATER CONSERVATION BOARD

Bob Pigeon629-2665



**Detailing Services to fit
your budget**

- Buffing
- Waxing
- Interior & engine
cleaning

Where you'll find
quality hand
picked cars,
trucks, RV's and
vans, that fit your
needs and your
budget-

THE HOUSE THAT QUALITY BUILT
809 6th St., Pine City-629-2551

Clubs

Continued from Page 32

WHITE PINE AUDUBON SOCIETY

Kelly Osterdyk629-7180

WOMEN'S AGLOW

Evelyn Hawkinson629-6365

YOUTH HOCKEY ASSOCIATION

Sue Rydberg-Sauter629-6365

AMBITIOUS PINES 4-H CLUB

Sue Osterdyk629-6641

Nancy Anderson629-3348

FAST FREIGHTERS 4-H CLUB

Pam Cummings629-3774

Janet Wiener629-6870

HARVESTORS 4-H CLUB

Alice Lindahl629-2782

LAKESIDERS 4-H CLUB

Ruth Bunce629-3015

MERRY MUSKRATS 4-H CLUB

Cordia Swenson396-3959

MISSION CREEKETTES 4-H CLUB

Carol Lightfoot629-6880

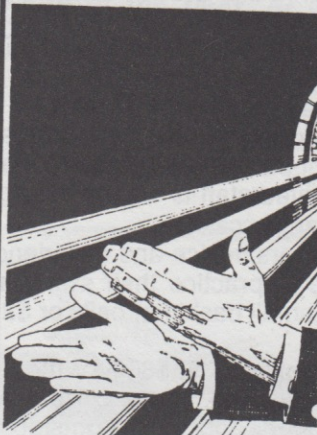
ROCK CREEK RAMBLERS 4-H CLUB

Bobbie Schultz629-6563

ROYALTON ROYALS 4-H CLUB

Tess HowardNo phone listed

**A helping hand
when you
need it most.**



*In your time of need
-we care.
Sometime each of us
must suffer the pain
of loss.
At such a time
depend on those who
understand. . .*

*Dan Rinden
& Mike Carroll*

SWANSON FUNERAL CHAPEL

655 W. 3RD AVE., PINE CITY-629-3120

Parks for fun, relaxation

Parks are among Pine City's most delightful features.

Robinson Park, in the downtown area, is a nice spot to read or relax. It's a popular place for family gatherings and community events, equipped as it is with a lovely brick gazebo. The shelter is used by picnickers and as a backdrop for musical groups who entertain in the park on Friday evenings in the summer.

Picnic tables, grills, water fountains and electrical outlets are among the park's other features.

The lively place to spend time during the summer is West Side Park on 6th Ave. Its public swimming beach, with bathhouses and lifeguards on duty daily, make it an ideal spot to spend time with the kids.

Swimming lessons are offered at the beach and at Hinckley's indoor pool in June and July. The schedule is announced in the local newspaper.

Other facilities at the park include playground equipment, picnic tables and a shelter, grills, a fenced horseshoe area with eight sets available,

basketball courts and a three-wall handball court.

For young children, Pine City has a new Robert Leathers playground, one of few in Minnesota. The multi-level, wood construction fantasy land features a castle, a dragon, a banana split boat, slides, swings, a car and much more.

Located on the grounds of Pine City Elementary School, the playground was built with the volunteer help of nearly everyone in the community, under the direction of architects from Robert Leathers firm in New York. It is open to the public daily, and picnic tables are incorporated in the design.

A new city park is under construction on the north bank of the Snake River in Pine City. In the future, it will offer boat moorings, picnic tables, grills, restrooms, walking paths and a nature pond.

Just across Highway 61 from the new Snake River Park is the Snake River Landing. Redesigned in 1989, the landing is nicely landscaped, completely blacktopped and offers ample parking for cars and trailers.

Public golf courses are a summer highlight

A lovely golf club is a summertime focal point of any lively community, and in Pine City, the country club is no exception.

Each year the beautiful nine-hole course attracts more area golfers and visitors alike because of all it has to offer.

A lovely clubhouse sports a full service pro shop and a dining area that accommodates up to 200 people. A 16 by 40 ft. deck facing the course is the perfect relaxation spot after a round of golf.

The club offers a full bar and Nicoll's in the Rough serves breakfast, lunch and supper daily. It is a great place for parties and banquets, and a dedicated and talented staff is always willing to prepare a meal for any occasion.

A driving range offers novice and experienced golfers the chance to practice their swing at a cost of \$1.25 for a small basket of balls or \$2.50 for a large basket.

Resident memberships cost \$350 for the family or \$240 for the individual. Senior citizens who are first time members and reside outside the 629 phone exchange can become members for \$325 for a family or \$205 for the individual.

Riding golf carts may be rented at the club.

The public is welcome to use the course on weekdays and weekends. The cost is \$7.25 for nine holes Monday through Thursday or \$9.75

all day. On weekends and holidays the fee is \$11.75 for the day.

Mondays and Thursdays are senior citizens day, when seniors can visit the club and golf all day for just \$5.75.

Men's league play is on Tuesday afternoons and women's on Wednesday morning and Wednesday evening. The senior men's league is on Thursday morning.

Newcomers and visitors to the area are encouraged to call the clubhouse, 629-3848 for more information.

POKEGAMA LAKE GOLF COURSE is four and one-half miles west of Pine City on County Road 11 at Joe and Neoma Woischke's Pokegama RV Park.

Open to the public, the nine-hole, par three course has no restrictions on playing time. It is open seven days a week from Memorial Day through Labor Day weekend. Hours are 9 a.m. until dark.

The cost for one round of play is \$4 or \$7 for the entire day. Students play for half price. Membership for singles is \$70; for couples, \$100; family of four, \$130 and \$20 for each additional family member.

Golfers are asked to check in at the RV park office before they set out on the course. For more information call 629-5552.

PINE
Snak
town
Lake
popu



PINE CITY SITS at the junction of the Snake River and Cross Lake. West of town, the river runs into Pokegama Lake. The waterway makes the area popular with summer cabin owners and

weekenders, who use it for boating and fishing. People can launch their boats at a nice landing in Pine City, on the north shore of the river, or west of town off of County Road 7 on Pokegama Lake.

AFFORDABLE AUTO BODY & PAINT



**CUSTOM PAINTING
& BODY REPAIR**

- GLASS REPAIRING
- RUST REPAIR
- ENAMELS & URETHANES
- FIBERGLASS REPAIR
- AMERICAN & IMPORTS

**INSURANCE
WORK
WELCOME**

BLOOMQUIST AUTO BODY

FREE ESTIMATES
N. HWY 61 PINE CITY

629-6161

"WE DO MORE FOR LESS"



HOPKINS SAND & GRAVEL

READY MIX CONCRETE
BEROUN•629-2522

The fine arts

Professional and amateur artists find a showcase for their talents in Pine City.

Residents can enjoy musical productions, plays, and art exhibits right in their own hometown.

The Pine City Arts Council is an active group. It keeps the calendar filled with delightful events which appeal to a broad range of people.

Each season a show or art contest is offered to the public, such as the Black and White drawing contest and show and a photography show. Entries in both are displayed at the Pine City Public Library. The Arts Council also sponsors Art in the Park performances by bands and various artists in Robinson Park. They are held on Friday evenings, from the first weekend in June to late July. The Art Fest is held on the third Saturday in July.

THE HERITAGE PLAYERS is Pine City's community theatre group. The group has built a wonderful reputation in the area with outstanding performances of "Annie Get Your Gun" and "The Matchmaker," "South Pacific" and "Mame," and "Annie," to name a few.

The performances all play to sell-out crowds. For more information on the group contact Joan Route or Don Lund.

STAN'S RADIATOR

-Complete Radiator Repair-

-New-Used-Heater Cores

Car and Truck Heaters

-Daka Docks-First in, last out



**STAN'S
RADIATOR SERVICE**

HANDLING YOUR RADIATOR BUSINESS SINCE 1949
Across from NWLP Gas Co., Hwy. 61 N. Pine City-6296193

PAMIDA®

IN PINE CITY

WEST HWY. 324, PINE CITY
EVERGREEN SQUARE



Recreation

In Pine City tennis is a popular pastime.. Two courts are situated just north of the Pine Technical Institute and eight near the high school. They are open to the public. The Rock Creek City Center, just south of Pine City, also has two new public courts.

A modern, three-theater cinema is located in Cambridge. The movie schedule appears in the Pine City Pioneer every week, or call 689-3005.

Anytime is the perfect time to polish bowling techniques. For information about leagues and lessons, call Pine City Lanes, 629-3622.

Bus service

Greyhound Bus Service is available from Pine City to the Twin Cities and Duluth.

To go to the Twin Cities passengers must be at the Tom Thumb store on Highway 324 by 10:50 a.m.

The bus to Duluth leaves from Tom Thumb at 2:05 p.m.

Call Tom Thumb at 629-3011 for details.

Legal aid

Legal Aid Service of Northeastern Minnesota (LASNEM), headquartered in Duluth, has a Pine City branch office which provides free legal advice and representation to low income people who live in Pine and Kanabec counties.

LASNEM is a private, non-profit corporation. It is not a part of the welfare system. LASNEM lawyers and paralegals specialize in problems that most commonly affect low income people, such as landlord-tenant disputes, public housing problems, deposits, evictions, problems with leases, foreclosures and cancellations, consumer disputes, bankruptcy, problems with local, state and federal government programs, problems involving custody, visitation, abuse and divorce.

For low income senior citizens and the disabled, LASNEM offers help with Social Security and SSI. It does not handle any criminal or traffic related cases.

The Pine City branch office is run by Carol Fehr, paralegal. It is located at 235 6th. St., Pine City; phone (612) 629-7166. Hours are 8:30 a.m. to 4:30 p.m. on Monday, Tuesday and Wednesday. Callers may leave a message on the answering machine if Fehr isn't there. She also covers two satellite offices in Sandstone and Mora.

Pine City industries

Pine City is a Minnesota Star City, recognizing it as a community prepared to work with industrial prospects.

Several small industries already call Pine City home.

THE ST. CROIX VALLEY BOTTLING COMPANY, formerly the Coca Cola Bottling Company, is owned by Viking Coca Cola of St. Cloud. The downtown Pine City distributorship employs about 20 people and markets Coca Cola products in east central Minnesota and western Wisconsin.

ATSCOTT MANUFACTURING has been one of the major industrial assets to the area since 1963. The company employs between 55-60 people in its two Pine City sites. Precision machine parts and mechanical assemblies are produced.

DAKA CORPORATION manufactures woodburning furnaces and other wood-related

products for nationwide distribution. DAKA also has a portable dock in its line of products.

SHAFER ELECTRONICS, with headquarters in Lindstrom and a plant in Forest Lake, purchased the former General Fabrication building in Pine City's Industrial Park. It manufactures all types of products for the electronics industry.

THE 3M PLANT in Pine City has 75 employees. It opened in 1968 and has since undergone two major expansions. The 24,000 sq. ft. building is the headquarters for manufacturing microfilm products which are shipped worldwide.

PRODUCT FABRICATORS, INC., headquartered in North Branch, purchased a building in Pine City's Industrial Park in 1987. The company makes electronics assemblies, precision sheet metal components for computers and large metal cabinet units. The Pine City Plant employs 20 people.

Veterinary services

The Pine City Veterinary Clinic has five skilled doctors on hand to handle large and small animal problems and diseases.

Dr. Russell Troolin, Dr. Greg Moulton, Dr. Paul Koskinen, Dr. Dan Walton and Dr. Donald Peterson can be seen by appointment or as needed in an emergency. Regular office hours are Monday through Friday, 8 to 5 p.m. On Saturday the veterinarians are available from 8 a.m. to noon by appointment.

The office is located on south Highway 61 in Pine City. The phone number is 629-7591.

Information

Visitors to Pine County will have all their questions answered cheerfully and quickly by the helpful staff at two information centers.

In Pine City, travelers may stop at the State Farm Insurance Building, 705 Hillside Ave., to find information on everything to see and do in Pine County. Call 612-629-7503.

Banning Corner at the intersection of I-35 and Highway 23, is where the other manned information center is located. The phone number is 612-245-5226.

The Pine County Tourism Association sponsors the traveler information centers.

Real estate

Because of the easy accessibility to two large metropolitan areas, Pine City real estate is very popular.

With the Twin Cities to the south and the Twin Ports to the north, the area often has non-residents looking for its great lands for fishing and hunting.

Real estate agencies serving the area are as follows:

Stoffel Realty, Inc., 575 4th St., 612-629-6966.

Coldwell Banker, 140 Evergreen Square, 629-7541 or 222-0024.

Century 21 Rush Realty, I-35 and County Road 1, Rush City.

BEROUN AUTO BODY

1/2 mile N. of Beroun on Old Hwy. 61

Dan Miller/Owner

629-2660

Open 8-5 Mon.-Fri.
8-12 Sat.



*FREE Estimates

*Complete auto body work & painting

*Glass Installation

*Collision frame work

We specialize in insurance claims

Sanitation

Abe and Henry Korf provide sanitation service in Pine City and the surrounding area.

Henry handles residential garbage collection and can be reached by calling 629-2039. Abe is the commercial garbage collector, and his phone number is 629-2089.

Korfs offer curbside pickup of recyclables on the second Tuesday of every month. The recycling service is free to their customers. Those who don't use their garbage collection services pay a nominal fee.

The Rock Creek and Rush City areas are served by M & M Sanitation, 358-4078 and by the Korf brothers.

In the Brook Park and Henriette areas call Kanabec Disposal, 679-1817, or Doug Dunkley Sanitation, Hinckley, 384-6566.

RECYCLING

Pine City area residents have a variety of options for disposing of recyclable material.

Lucky 7 Recycling in Pine City is located one block north of the old railroad depot in the former Schmidt warehouse building. It is open from 9 a.m. to 4 p.m. Tuesday through Saturday.

Stan and Gene's Auto and Salvage, just north of Pine City on Highway 61, takes some recyclables.

In addition to all types of scrap metal, Stan and Gene's accepts aluminum cans, tin cans, glass bottles and jars and auto batteries.

The business is open from 8 a.m. to 5:30 p.m. Monday through Friday and until noon on Saturday. For more information, call 629-2030.

Korf Brothers pick up recyclables on the second Tuesday of every month. All recyclables must be sorted and left at the curb. Korfs accept aluminum and tin can, recyclable plastics and glass. They do not take cardboard or newspaper.

Residents may also use the recycling drop shed at Rock Creek Motor Stop, I-35 and Highway 70 in Rock Creek, or the shed in Henriette, behind the town hall.

Pine County garbage haulers and the public dispose of non-recyclable garbage at the East Central Solid Waste Commission's landfill near Mora. The facility is west of Mora on Highway 23. It is open Monday through Saturday.

A separation and compost facility is available at the landfill site. For more information call the East Central Solid Waste Commission, 358-3635.

Gas, electric

Utility needs are served by a number of companies throughout Pine County. For information on city sewer and water hookups, contact local city offices.

ELECTRIC SERVICES

East Central Electric, 585 Hillside Ave., Pine City, has served parts of Pine County for 41 years. For service in the Pine City area call 629-2002.

North Pine Electric Cooperative provides service to most of rural Pine County north of Beroun, half of Finlayson and part of Denham. To begin service, call North Pine Electric's office in Finlayson at 233-6311.

United Power Association opened an emergency power station south of Pine City in 1979 to help provide power in emergencies and power to the electric cooperatives in the county. The telephone number there is 629-3466.

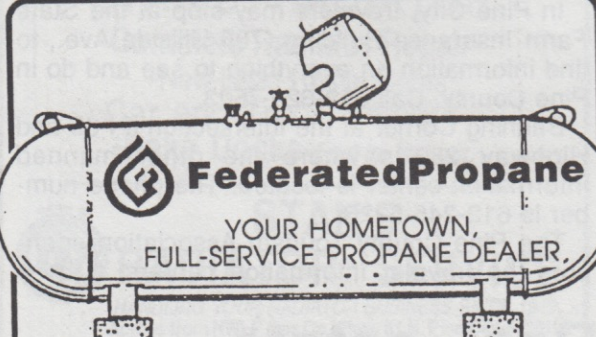
GAS COMPANIES

Peoples Natural Gas Company in Pine City services much of Pine County. The Pine City number is 629-2533, the tollfree number, 1-800-862-7088.

Northwest LP Gas company serves the gas needs of consumers in east central Minnesota and west central Wisconsin. To start delivery, call 629-3483.

Federated Propane serves farms, homes and industries in the area from its office at Highway 70 and I-35 in Rock Creek. The number is 629-7435 or tollfree, 1-800-622-9730.

Bulk and bottled petroleum products are available through several area businesses.




FederatedPropane
YOUR HOMETOWN,
FULL-SERVICE PROPANE DEALER.

Serving
Home, Farm & Industry
SINCE
1942

- Competitive Prices
- Patronage Refunds
- 24 Hour Emergency Service
- Low Cost Tank Set
- First Fill Discount
- 12 Month Budget Pay Plan
- Discount for cash
- Scheduled Deliveries
- Fully trained servicemen
- Sales, Service & Installation of Gas Appliances

Call for details today!
Rock Creek.....612/629-7435
Toll Free.....1-800-622-9730



GAS CHECK TM
G.A.P.P.
GAS APPLIANCE PROTECTION PLAN



Lakeside

Supper Club

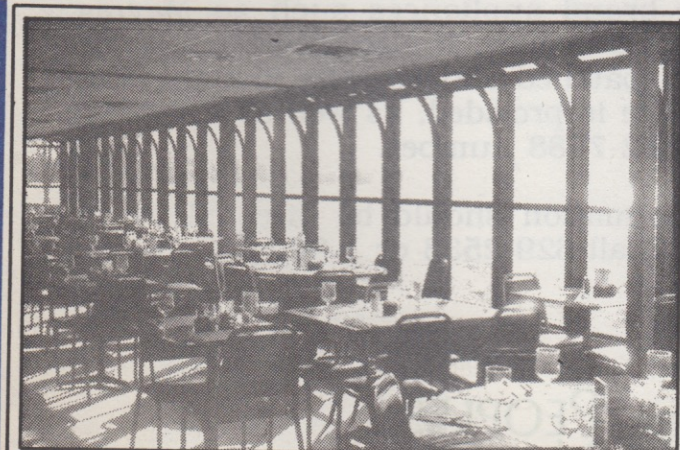
On the N. end of Pokegama Lake, Cty. Rd. 11,
4 miles W. of Pine City-629-9996

**OPEN 7 DAYS
A WEEK**

**FINE DINING
IN THE COUNTRY**



*Fine dining is only a short drive away.
The spectacular view of Lake Pokegama
will compliment any meal. Daily
specials are available.*



*We have the perfect setting for your
party, wedding or banquet
-our private party room
accommodates up to 225.*



*Enjoy live music every Friday
and Saturday night. On & Off
sale liquor is available
in the lounge-*

*For year round dining and entertainment-
Remember Lakeside Supper Club*

WE'RE HERE TO SERVE YOU!



FROM LEFT TO RIGHT, back row, are Bill Balk, Dennis Erickson, Jay Jahnz, Paul Miller, Ken Geisler, Les Benson, Ray Johnson, Ed Schumacher, Pete Engel and Patty Keyport. In front are Mary Hatz, Bill Anderson, Steve Odegard, Dale Kirchberg, Gary Decker, Dennis Vacinek, Charles Erickson, Gloria Loudon and Gene Pals.

Peoples Natural Gas, with its district office in Pine City, has served Pine County since 1959. The company has served the natural gas needs of other Minnesota communities for 61 years.

The district office in Pine City includes a large appliance display floor, featuring name brand appliances such as Maytag, Caloric, Empire, Mor-Flow, and Lennox. It also provides full customer services and radio dispatched service calls to eight vehicles. Twenty-four hour service is provided, as well as a toll-free service information 1-800-862-7088 number.

All billing and service information should be directed to the Pine City office, 115 6th St. Call 629-2533 or 1-800-862-7088.



PEOPLES
NATURAL
GAS

155 6TH ST. PINE CITY
1-800-862-7088 or 629-2533

NATURAL GAS:



THE BEST ENERGY ON EARTH

