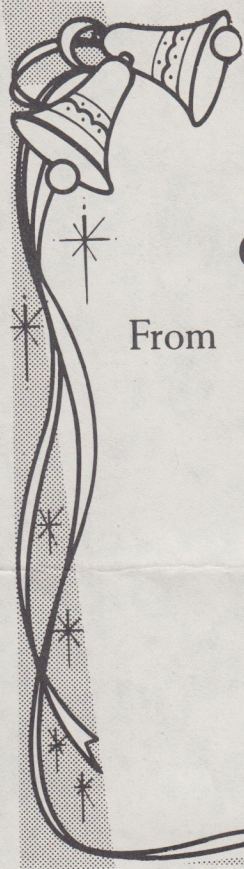


EC → PICKINGS



SEASON'S GREETINGS!

From the Board of Directors
and Employees.

May the meaning
of Christmas
be deeper, its
friendships stronger,
its hopes brighter
as it comes to you
this year.

ON THE COVER —

Jason Robards, one of the stars in the CBS Christmas Special "The Melodeon," trudged through a snowy cornfield past an old kerosene lantern. The drama was filmed on location in East Central Minnesota during the month of October. Story and more photos on pages 4, 5 and 6.

Photo by Colin Brown

NOTICE

East Central Electric Offices will be closed
Monday, December 25, 1978 and **Monday,
January 1, 1979** in observance of **Christmas
and New Year's.**

EMERGENCY DIRECTORY

Braham and Cambridge Districts

Braham Office396-3311
Cambridge Office.....689-1171
After Hours396-3312

Rush City and Pine City Districts

Rush City Office358-4777
Pine City Office629-2002
After Hours: 629-2002

Milaca District

Milaca Office983-3129
After Hours: 983-3120

OFFICE HOURS

8 a.m. to 4:30 p.m. Monday thru Friday

Please cut out information for your area and affix
near your telephone along with your ECEA
Account Number.

MOVING?

If you are moving, clip out this form
and mail this information to your
district office.

Name _____

Account No. _____

Forwarding
Address _____

Date you want
service discontinued _____

Final meter reading _____

Are you moving to another
location on our system? _____

Where? _____

PICKINGS

DECEMBER 1978

VOL. 37 NO. 12

Published Monthly by
EAST CENTRAL ELECTRIC
412 North Main
Braham, Minnesota 55006

Edited by
Wally Soderman

General Manager's Comments . . .

UPA MAKES REFUND ON WHOLESALE POWER COST

Harvey Erickson, President of our Board of Directors, has announced that an estimated \$1,200,000 will be returned to the consumer members of the cooperative by March 1, 1979. This refund is the result of United Power Association (UPA) Elk River, Minnesota, the wholesale supplier of electricity refunding these dollars to East Central Electric Association.

President Jacob A. Nordberg of UPA, in announcing UPA's refund to its member systems, stated that when the Board of Directors of UPA established its 1978 rates approximately one year ago, the rates were designed to provide only the necessary revenue to cover the financial obligations of UPA. He pointed out that assumptions made at that time have changed and have resulted in UPA receiving revenues which were over and above the needs of the cooperative.

Mr. Nordberg said that UPA presently generates approximately 60% of its members' needs from its own generating facilities and purchases the remaining 40% to meet the total needs of its member systems. He went on to explain that UPA anticipated purchasing a substantial amount of electric energy from neighboring electrical systems that would be produced from oil fuel generation facilities. During the year, as a result of lower electric loads by the neighboring utilities, UPA was able to buy large amounts of electric energy from coal-fired plants at substantially reduced costs. He also said that UPA purchased power from dams on the Missouri River at less than anticipated costs. This generation was available due to the abnormally high levels of rainfall in the western states over the last one and one-half years.

Mr. Nordberg said the Rural Electrification Ad-

ministration (REA) in Washington, D.C. is allowing the cooperatives to treat this year's revenue as an exception. He explained that under normal conditions a cooperative would return any margins to its members in the form of capital credits. However, because of the extraordinary amount of margins in 1978, REA has agreed with UPA and its member systems that those members who created the surplus should be the ones to immediately benefit from the payback.

East Central's member refunds will be based on the members' electrical energy usage for the full year of 1978. This means that each member will receive a proper share of the total refund.

We have determined that a tentative timetable for implementing the refund would be as follows: by the end of January, 1979, the total electrical energy usage will be calculated for each member. Also during January, the exact amount of the refund will be determined. Based on these two figures, the proper share of the refund will be calculated for each member.

During the month of February, refund checks will be mailed to the members. A letter will be attached with the check explaining the specific details of the refund. If a member's account is in arrears, a credit to the member's bill will be made instead of refund by check.

As a cooperative, East Central Electric Association exists to serve its members in the most efficient manner possible. We are pleased that the conditions occurred that allowed UPA to purchase energy at a lower cost. This is a rare happening in this day; but since it has occurred, we feel it only fair that the savings be passed on to our members.

Jerome Haider
General Manager

FOUR AREA YOUTH ATTEND MAC YOUTH CONFERENCE

Brenda Reiersen, Pine City; Laura Jean Smith, Cambridge; Dana Belkholm, Ogilvie and Joseph Lichy of rural Sauk Rapids, represented East Central Electric at the 23rd Annual Meeting of the Minnesota Association of Cooperative.

The two-day conference included a visual presentation of Minnesota cooperatives, "Youth Talk it Up Sessions", and a "Youth Wants to Know Panel" in which cooperative leaders answered questions formulated by the youth delegates.

Monday evening the delegates attended a banquet at which Rudy Perpich, Governor of Minnesota, gave greetings and Laura Heuser, American Agri-Women, was guest speaker.

During the conference, the delegates visited various cooperative facilities in the Twin City area and attended a concluding luncheon on Tuesday featuring a "Salute to Coordinate Campuses of the University of Minnesota".

CBS CHRISTMAS SPECIAL FEATURES EAST CENTRAL MINNESOTA SETTING!

Article and Photos by Colin Brown

The dust has settled, the plastic snow has been raked up, the huge trucks with California license plates have headed west, the friendly strangers with the slightly southern accents have disappeared, and the rural countryside between the St. Croix River and Braham is it's peaceful, almost drowsy self once again. The magic-makers from Hollywood have come and gone, leaving

hardly a visible trace behind, but the experience won't soon be forgotten by the many East Central Minnesota residents who were affected by the making of the CBS Television Christmas special, "The Melodeon".

During nearly the entire month of October the talk over coffee in small towns, such as Hinckley, Rush City and Braham, has centered over the making of the "The Melodeon". Produced and directed by George Englund, and

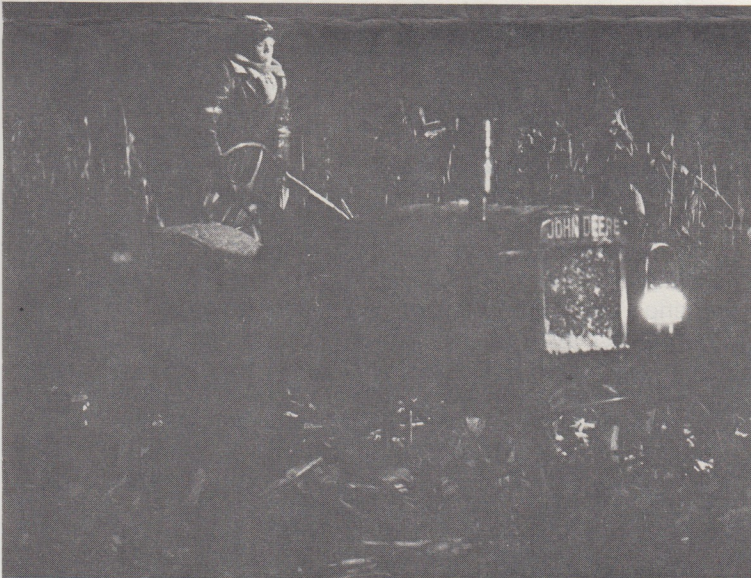


A mobile dressing room was set up at each of the filming locations.



Mr. and Mrs. Arvid Carlson, right, sat with Eva Marie Saint, Jason Robards and another crew member during a break in the filming. The Carlsons, of rural Braham, were instrumental in securing the use of the Royalton Church and also played small roles in the production.

George Parry, in one of the starring roles, was perched atop an old John Deere tractor prior to filming one of the blizzard scenes.



Extras from the Braham and Rush City areas mingled outside the Royalton Church during a break between scenes.



starring Jason Robards, Eva Marie Saint and George Parry, "The Melodeon" is a series of flashbacks in which a man recalls growing up on his grandparents' farm during the Great Depression. The story concerns the conflict that develops between the boy and his grandfather, and how it is resolved through the efforts of the grandmother.

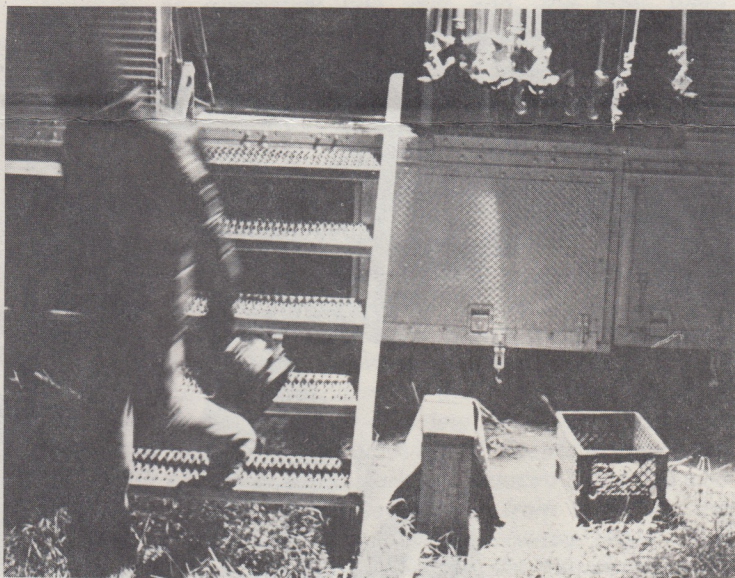
"The Melodeon" is based on a book by the same title written by Glendon Swarthout. The screenplay was written by Emmy Award winner Stewart Stern. A melodeon, by the way, is a small reed organ motivated by vigorous pumping of foot pedals.

Area residents who chanced to take part in or observe the production must surely have a better understanding of the enormous undertaking required to make a movie.

Finding a farm with buildings and features to fit the depression period may have been the easiest task faced by Mr. Englund. Many area residents eagerly came forth with furniture, clothing and other props for the production. Much of the work with the sets was also accomplished with local labor.

There was food to be catered for cast and crew members, security was required at times to handle the crowds of curious onlookers, and more than once a rented station wagon was seen in a futile attempt to herd a group of poor, bewildered, borrowed cows into submission. More often than not, the cows got their way.

The Christmas time setting required snow, and although Minnesota is a state of legendary snow, the real →



A crew member hustled out of the equipment truck during one of the night filming sessions.

At left was one of three giant fans used to blow the plastic snow for the storm scenes. A sound man held the microphone on a boom over the camera crew on the right.



The Ida Heinrich farm east of Rush City was cluttered with lighting equipment and other props. Two 1930's vintage automobiles graced the driveway.

Eva Marie Saint found a few quiet moments for contemplation in the cemetery outside the Royalton church.



thing was not forthcoming in an October that was balmy than usual. And so there was snow to be manufactured. Flocked snow, foamed snow, plastic flaked snow, even bedsheets stuffed with straw draped over the eaves of buildings snow.

An innocent passer-by a few miles west of Hinckley at 3:00 a.m. October 21st would have been startled to walk into a full-force blizzard. Three huge fans sent swirling clouds of plastic snow ankle-deep into a remote cornfield.

"More snow, I need more snow", the director called at the end of the take. "Why is it", he asked the special effects crew, "that the snow always thins out at the end of that shot?" On the next take the snow was steady, white, blinding, almost a solid wall.

"Good", Englund said almost to himself, "much better".

Area residents eagerly await the telecast of "The Melodeon" in hopes of seeing a familiar setting, or even the face of a friend or oneself in the role of an extra. Publicity Coordinator, Bonnie Graves, was quick to express the crew's thanks for the efforts put forth by the many local residents who participated in some way, however small, in the making of "The Melodeon".

"Everyone has been just great", she said. "We just couldn't have done it without the help, the effort that everybody made".

"The Melodeon" is tentatively scheduled to be broadcast on CBS stations on Wednesday, December 20.



Between takes George Parry, right, found time to chat with some of his new local friends.



Eva Marie Saint took time to sign autographs for many of the people who watched portions of the filming.

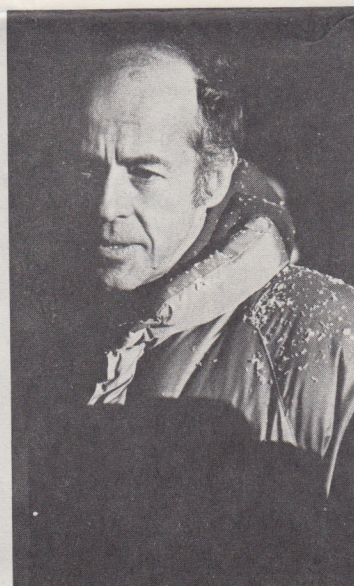
A plastic snow storm filled the air and created an eerie atmosphere during an after dark filming session.



Jason Robards.



Producer-Director George Englund.



DIRECTOR LEONARD MACHART RETIRES AFTER 18 YEARS OF SERVICE



Leonard Marchart has been a member of the East Central Electric Association's Board of Directors since 1960; representing the City of Pine City.

He attended high school in Pine City and Business College in Minneapolis.

Mr. Machart started banking at Beroun and in 1942 consolidated the Beroun State Bank with the First National Bank of Pine City.

Leonard has always promoted the Pine City community and its surrounding areas. He served as the mayor of Pine City for four years. He also put in years of effort in the water stabilization programs for Cross and Pokegama lakes. Mr. Machart helped in the organizing of Pine City Development Corporation.

Leonard and his wife, Grace, are members of the Pine City Presbyterian Church. The Macharts' son, David, is married and has two sons. David, an electronic engineer, and his wife, Beverly, a technical writer, are both employed by IBM at Rochester.

As a member of East Central's Board, Mr. Machart has been vitally interested in good electric service for East Central's members. He has also helped promote new industry to locate in East Central's service area.

The Board took action not to fill the vacancy at this time. The position will be up for election at the Annual Meeting in March of 1979.

MAKE SURE YOUR ENGINE HEATER ISN'T AN ENERGY WASTER

Many people in East Central's service area use engine tank, hose or block heaters during the winter months to insure that their cars, trucks and tractors will start when they are needed.

Engine heaters will range in wattage from 1000 watts up to 2500 watts for large diesels. The manufacturers of engine heaters build thermostats into the units, but it has been proven through test metering that during cold, windy spells these thermostats seldom turn off.

Testing has also indicated that most vehicles need only one, or at the most two hours of heating to warm an engine to starting temperatures.

If a tractor were used only a few hours during the day for chores and spent the rest of the day and night with the engine heater plugged in, the heater could use as much as 930 kilowatts per month. Even at our lowest billing rate, that adds up to nearly \$35.00 per month.

If the same heater were operated by a 24-hour time clock, so that the heater would only operate for two hours a day, the same service would be provided for about \$2.50 -- a savings of \$32.50, more than enough to pay for the timer in less than one month!

An alternative method of operating the engine heater would be via a separate circuit controlling the outlet the heater is plugged into. The heater could be plugged in when the vehicle is parked, but the heater need not be turned on until a few hours before the vehicle is started.

(You might check the wiring at your fusebox or circuit breaker panel and discover that your garage or an outside outlet is on a separate, switchable circuit.)

Be sure that any extension cord or timer you use with an engine heater has the capacity to handle the wattage of the heater. Also be sure that if the cord for the heater is a three-prong grounded plug that any extension cord or timer will accept a three-prong plug.

You might also find that an inexpensive tune-up may eliminate the need for a heater altogether.

Citizens Route Evaluation Committee Schedules Meetings on the 230 KV Benton County Milaca Line

William Kaschmitter, chairman of the Citizens Route Evaluation Committee studying routes for the United Power Association (UPA) Sauk Rapids-Milaca 230 kilovolt power line, has announced a schedule of future committee meetings.

At these meetings the committee will discuss topics related to routing the power line and listen to comments from residents about routes and how individuals may be affected.

"We want to work with people in the area both in studying the routes proposed by UPA and in looking at other possible locations for this line," said Kaschmitter. "The committee would like to invite everyone in the area to attend these meetings. We are using detailed aerial photographs and topographical maps of the area to study routes and plan to go by bus to take a first-hand look. However, we still need to hear what people think."

The following is a schedule of committee meetings:

December 7	Foley	Construction, ROW Maintenance, and electrical effects.
December 14	Foley	Easements and Eminent Domain
December 21	Foley	Comments from Local Officials
January 4	Foley	Deadline for New Route Proposals
January 11	Foley	CREC Begins Writing Its Routes Recommendation Report to the MEQB.

All meetings will begin at 7:30 p.m. and will be held in the Foley Elementary School Library.

The first half of each meeting will usually be devoted to the topic with time for questions and answers. The second half will be open for discussion of routes by committee members and the public. Staff of the Environmental Quality Board, the state agency which will designate the route for the line, will attend all meetings to assist and advise the public. UPA representatives will also be on hand to answer questions.

THE Rural Home

"Upside Down Ham Squares" recipe won the "Air Pot" for Mrs. Keith Carpenter of Rural Foreston.

For our next contest please send in your favorite recipe for yeast breads. Add suggestions that may be helpful in making the recipe for the first time. The winner will receive a Toastmaster Waffle Iron.

Send your recipe with your name, address, phone number and location number to: The Rural Home, East Central Electric Association, Braham, Minnesota 55006, by the 10th of the month. In case of duplication, the recipe with the earliest postmark will determine the winner.

UPSIDE DOWN HAM SQUARES

6 whole sweet potatoes (left-over or 1 can)	6 cups left-over ham
1/4 cup firmly packed brown sugar	2 medium sized apples
1 T. butter, melted	1 med. onion, peeled & quartered
1/2 t. salt	1 cup soft rye bread crumbs
3/4 t. pumpkin pie spice	2 eggs slightly beaten
	1/4 cup apple juice

Line bottom of 8x8x2 inch baking dish with a double thickness of foil, enough to fit across bottom and up the sides of pan with one inch overhang. Lightly grease foil.

Mash potatoes with fork in bowl, beat in brown sugar, melted butter, salt and pumpkin pie spice. Spread in even layer in foil lined pan.

Cut ham in small chunks, pare and quarter apples. Put ham, apples and onion through food chopper using course blade. Place in large bowl. Stir in bread crumbs, eggs and apple juice. Pack light in even layer over potato mixture in pan. Bake 350° for 1 hour, until firm and lightly golden. Cool for 5 minutes. Invert on serving platter, peel off foil. Serves 8.

Garnish with apple slices, if desired.

Mrs. Keith Carpenter
Route 1
Foreston, Minnesota 56330

SHEPHERD'S PIE

4 cups left-over meat, cut in cubes	2 cups diced cooked carrots
3 cups mashed potatoes	1 egg, well beaten
1 small onion - cooked	Salt and pepper
2 1/2 cups gravy	

Arrange meat, carrots and onions in a buttered casserole. Pour over the gravy. Mix mashed potatoes and egg together. Salt and pepper to taste. Spread over other ingredients and bake at 375° for 45-60 minutes.

Mrs. Richard J. Kampa
Route 3
Foley, Minnesota 56329

PARTY TURKEY

2 pkg. Frozen Broccoli, Cooked and drained	1/4 cup Chopped Onion
2 cans Cream of Chicken Soup	1/2 cup Slivered Almonds
2 T. Melted Butter	1 cup Bread Crumbs
1 cup Mayonnaise	2 cups Cheddar Cheese, grated
1 T. Lemon Juice	4 cups left-over Turkey pieces

Place cooked broccoli in bottom of 9x13 inch pan. Add a layer of turkey pieces. In a bowl mix soup, mayonnaise, onion, lemon juice and slivered almonds. Spread this on top of turkey pieces. Top this with grated cheddar cheese. Mix bread crumbs and melted butter and sprinkle on top of cheese layer.

Bake 350° for 45 minutes.

Optional: Add canned fried onion rings last 5 minutes of baking.

Donna Zieba
638 South Dellwood
Cambridge, Minn. 55008

HOLIDAY ECHO SALAD

6 Creamette Jumbo Shells
2-3 cups cooked chicken, cut up
1 cup thinly sliced or chopped celery
1/2 cup finely shredded carrots
1 cup frozen peas or canned, drained
1 small minced onion
1/4 cup pimento, diced (optional)
Salt to taste
Enough salad dressing to hold together and moisten

Mix all ingredients together and fill shells that have been prepared according to their directions on package.

Variation: Use turkey, ham and drain mixed vegetables.

Makes a lovely noon luncheon served with buns and dessert.

Dena Bekius
Route 4, Box 88
Princeton, Minn. 55371

ALMOND GOBBLER

1 cup (4 oz.) Shredded Cheddar Cheese
1 T. Flour
1 cup Blue Diamond Blanched slivered almonds, toasted
3 cups cooked, chopped turkey
1 1/2 cups celery slices
1 T. lemon juice
1 cup Kraft Mayonnaise
1/2 t. poultry seasoning
1/2 t. salt
1/8 t. pepper
Pastry for 2 crust 9-inch pie

Toss cheese in flour. Combine 3/4 cheese, 1/2 cup almonds, and remaining ingredients except pastry. Mix well. Roll pastry into a 15 inch square. Fit pastry into a 11 3/4 x 7 1/2" baking dish. Trim to 1-inch beyond edge. Flute edge.

Fill with turkey mixture. Top with remaining cheese and almonds. Bake at 400° for 30-35 minutes. Garnish with lemon twists and parsley, if desired. Serves 6-8.

Mrs. Fern E. Dahlin
Route 1, Box 182
Cambridge, Minn. 55008